

Ufx Tactical Polo Female Short Sleeve

line 3

Elbeco Style K5170LC/K5171LC/K5172LC/K5174LC/K5177LC/K5178LC/K5179LC/K5162LC

- Style:** This loose-fit, polo-style, short sleeve, knit shirt is made with the Ladies Choice pattern. Polos have gusseted side panels, three-button placket with mic loop, full-fashion knit collar and mic pockets on shoulders. All measurements are taken without stretching the material.
- Tailoring:** It is imperative that this garment is constructed according to the principles set forth in the specifications. All stitches must be of proper tension and size to avoid puckering after the shirt has been laundered and give the best durable press performance.
- Fabric:** 100% polyester, circular-knit, Swiss pique, weighing 7.25 oz. per square yard. Permanent Nano moisture wicking takes moisture away from the body for superior comfort, thermal protection, ultimate dryness, and enhanced performance while providing UV protection. Fabric is colorfast, abrasion-resistant and pill-proof. Permanent anti-microbial technology is odor, mildew and 99.9% bacteria resistant.
- Colors:** White, black, tan, navy, spruce green, gray, French blue and royal blue.
- Collar:** To be 100% polyester, circular-knit, full-fashion collar with 2¾" points and permanent built-in stays placed along the edge for no-curl collar performance. Weight is 7.25 oz. per square yard.
- Sleeves:** To be one piece, have a 1" rib knit welt hem and graded lengths. Sleeve setting and closing are done with a merrow stitch. There is a ¼" top-stitch around the armhole and next to welt at sleeve hem. Left sleeve has a pencil pocket, 2" wide x 5½" long, which is divided into two compartments.
- Placket:** Three-button placket is lined and finishes 1½" wide x 6" long. Bottom of placket has a ½" stitched box with a ½" mic loop sewn over the full width of the placket. Three buttons are evenly spaced on the placket with a horizontal buttonhole at the collar and vertical buttonholes for the two remaining buttons. Placket laps right over left.
- Flex Vent:** Flex vent is made from 92% polyester/8% spandex mesh knit. Diamond-shaped mesh measuring 2½" wide x 8" long is set into the sleeve and body panels at the underarm to allow body heat ventilation, increased mobility, and comfort.
- Seams:** Shoulder seams contain stretch elastic for increased mobility and are edge-stitched on the back. Both shoulders contain a mic pocket, approximately 1¾" wide x 2" deep, sewn into the shoulder seam.
- Thread:** Thread for seaming, stitching, buttonholes, and button sewing is cotton-covered polyester core. Thread is stabilized so as not to shrink in boiling water more than 1.5%.

Ufx Tactical Polo Female Short Sleeve

Elbeco Style K5170LC/K5171LC/K5172LC/K5174LC/K5177LC/K5178LC/K5179LC/K5162LC

Back: A semi-circular patch measuring 3½" at the widest point is sewn at the neckline, running ½" from each shoulder seam. Seam edge is merrowed with single-needle top-stitching sewn around the edge. The heat-transfer label is applied to the inside of this patch below the collar.

Bottom Hem: To be 1" deep and top-stitched.

Labels: Each garment has a heat-seal brand label containing size, country of origin, care, and content. An Ufx and Ladies Choice hang tag is attached to the garment.

Pressing and Packing:

Shirts are carefully completed in first class manner and individually packed in polyethylene bags. Shirts are bulk packed.

UPC Identification:

A printed UPC bar code tag must be attached to every garment. The UPC bar code must identify style, color, and size information to be incorporated into an inventory management system. Appropriate support documentation must be available to assist the Agency in encoding UPC information.

Code of Conduct:

All garments must be produced in acceptable non-sweatshop working conditions. Verification of acceptable working conditions are made through a completed Code of Conduct document that must be made available to the department. This document should list the location of the manufacturing companies/facilities and address child labor, wage and benefits, overtime, forced labor, freedom of association, harassment or abuse, health and safety, hours of work, nondiscrimination, and no retaliation guidelines. Noncompliance of this clause is cause for rejection.

Finished Dimensions:

Size:	XS	S	M	L	XL	2XL	3XL	4XL
Collar Length	14	15	16	17	18	18	19	19
Chest:	38	40	42	44	46	48	50	52
Sweep/bottom	39	41	43	45	47	49	51	53
Back Length	24	25	26	27	28	29	30	31
Sleeve Length	8¾	9	9¼	9½	9¾	10	10¼	10½

October 20, 2020

Ufx Tactical Polo Male Short Sleeve

line 4

Elbeco Style K5130/K5131/K5132/K5133/K5134/K5135/K5136/K5137/K5138/K5139/K5152

- Style:** This loose-fit, polo-style, short sleeve, knit shirt has gusseted side panels, three-button placket with mic loop, full-fashion knit collar and mic pockets on shoulders. All measurements are taken without stretching the material.
- Tailoring:** It is imperative that this garment is constructed according to the principles set forth in the specifications. All stitches must be of proper tension and size to avoid puckering after the shirt has been laundered and give best durable press performance.
- Fabric:** 100% polyester, circular-knit, Swiss pique, weighing 7.25 oz. per square yard. Permanent Nano moisture wicking takes moisture away from the body for superior comfort, thermal protection, ultimate dryness, and enhanced performance while providing UV protection. Fabric is colorfast, abrasion-resistant and pill-proof. Permanent anti-microbial technology is odor, mildew and 99.9% bacteria resistant.
- Colors:** White, black, tan, light blue, navy, red, O.D. green, spruce green, gray, French blue and royal blue.
- Collar:** To be 100% polyester, circular-knit, full-fashion collar with 2¾" points and permanent built-in stays placed along the edge for no-curl collar performance. Weight is 7.25 oz. per square yard.
- Sleeves:** To be one piece, have a 1" rib knit welt hem and graded lengths. Sleeve setting and closing are done with a merrow stitch. There is a ¼" top-stitch around the armhole and next to welt at sleeve hem. Left sleeve has a pencil pocket, 2" wide x 6" long, which is divided into two compartments.
- Placket:** Three-button placket is lined and finishes 1½" wide x 7" long. Bottom of placket has a ½" stitched box with a ½" mic loop sewn over the full width of the placket. Three buttons are evenly spaced on the placket with a horizontal buttonhole at the collar and vertical buttonholes for the two remaining buttons. Placket laps left over right.
- Flex Vent:** Flex vent is made from 92% polyester/8% spandex mesh knit. Diamond-shaped mesh measuring 3½" wide x 10¼" long is set into the sleeve and body panels at the underarm to allow body heat ventilation, increased mobility, and comfort.
- Seams:** Shoulder seams contain stretch elastic for increased mobility and are edge-stitched on the back. Both shoulders contain a mic pocket, approximately 1¾" wide x 2" deep, sewn into the shoulder seam.
- Thread:** Thread for seaming, stitching, buttonholes, and button sewing are cotton-covered polyester core. Thread is stabilized so as not to shrink in boiling water more than 1.5%.

Ufx Tactical Polo Male Short Sleeve

Elbeco Style K5130/K5131/K5132/K5133/K5134/K5135/K5136/K5137/K5138/K5139/K5152

Back: A semi-circular patch measuring 4½” at the widest point is sewn at the neckline, running ¼” from each shoulder seam. Seam edge is merrowed with single-needle top-stitching sewn around the edge. The heat transfer label is applied to the inside of this patch below the collar.

Bottom Hem: To be 1” deep and top-stitched.

Labels: Each garment has a heat-seal brand label containing size, country of origin, care, and content. A Ufx hang tag is attached to the garment.

Pressing and Packing:

Shirts are carefully completed in first class manner and individually packed in polyethylene bags. Shirts are bulk packed.

UPC Identification:

A printed UPC bar code tag must be attached to every garment. The UPC bar code must identify style, color, and size information to be incorporated into an inventory management system. Appropriate support documentation must be available to assist the Agency in encoding UPC information.

Code of Conduct:

All garments must be produced in acceptable non-sweatshop working conditions. Verification of acceptable working conditions are made through a completed Code of Conduct document that must be made available to the department. This document should list the location of the manufacturing companies/facilities and address child labor, wage and benefits, overtime, forced labor, freedom of association, harassment or abuse, health and safety, hours of work, nondiscrimination, and no retaliation guidelines. Noncompliance of this clause is cause for rejection.

Finished Dimensions:

Size:	XS	S	M	L	XL	2XL	3XL	4XL	5XL	6XL
Collar Length	14	15	16	17	18	19	20	20	21	22
Chest	35	39	43	47	51	55	59	63	67	71
Sweep/Bottom	35½	39½	43½	47½	51½	55½	59½	63½	67½	71½
Back Length	27¼	28¼	29¼	30¼	31¼	32¼	33¼	34¼	35¼	36¼
Sleeve Length	9	9	9½	10	10½	11	11½	12	12½	13

October 20, 2020

TexTrop2 Female Short Sleeve Shirt With Zipper
Elbeco Style

line 5

Z9810LCN/Z9811LCN/Z9812LCN/Z9813LCN/Z9814LC/Z9819LCN/Z9820LCN

- Style:** It is the intention of this department to secure a tailored shirt equal in quality of workmanship and style to the shirt now on display as a sample. Elbeco TexTrop2 brand or pre-approved equal only. Shirt is cut in the Ladies Choice pattern with expanded chest, waist and hip dimensions for a more flattering fit.
- Tailoring:** It is imperative that this garment is constructed according to the principles set forth in the specifications. All stitches must be of the proper tension and size to avoid puckering after the shirt has been laundered and give best durable press performance. All sewing is with Dacron core thread to match shirt fabric. Collar is single-stitched 1/4" from edge. Pockets and flaps are single-stitched on the edge.
- Fabric:** 100% texturized polyester, plain-weave with mechanical stretch to insure permanent moisture control, superior breathability, soil resistance, easy care, wrinkle resistance, color matching and color retention. Weight is 5.5 oz. per square yard. Nano moisture wicking technology is applied at the fiber level to capture and pull fluids and perspiration away from skin and spread it over fabric surface for quick evaporation to keep the wearer dry and comfortable.
- Colors:** White, gray, tan, blue, midnight navy, French blue and black.
- Collar:** Convertible collar is one piece, measures 3 1/8" long at the points and 1 5/8" wide at back and is constructed of two plies of basic material and one ply of D331 top fuse lining. Collar and inner yoke are lined with matching 65% Dacron polyester/35% cotton, weighing 4.2 oz. per square yard, 106 x 58. Collar lining is banana-shaped. Collar stays are of good quality vinyl that measure 2 3/4" long x 3/8" wide and are attached to the bottom collar.
- Sleeves:** To be straight and whole, have 1" hems and finish 9 1/2" long from shoulder seams. Sleeves must be secured to the body of the shirt by a merrow stitch with a safety stitch to properly strengthen the stitch. The same stitch is used on the side closing seams.
- Flex Vent:** Flex Vent is made from 92% polyester/8% spandex mesh. Diamond-shaped mesh measuring 2 1/2" wide x 8" long is set into the sleeve and body panels at the underarm to allow body heat ventilation, increased mobility and comfort.
- Front:** Front has a center facing 3" wide extending from neckline to bottom of shirt provided by a turnunder of material. Right front has a lined box-pleat 1 1/2" wide, finished, running full length of the shirt and is top-stitched 1/4" from both edges. Center front contains seven vertical buttonholes placed 3/4" from edge; first at the neck, second 2 1/2" down and the balance 3 1/2" apart.

TexTrop2 Female Short Sleeve Shirt With Zipper
Elbeco Style
Z9810LCN/Z9811LCN/Z9812LCN/Z9813LCN/Z9814LC/Z9819LCN/Z9820LCN

Dual Comm Access Openings:

Access openings measuring 1½" are set in each side seam 1" below the bottom tip of the Flex Vent. Pouch-style openings are clean-finished, neatly-concealed and reinforced for durability. Openings are used to thread communication wires under the front of the shirt to keep them out of the way.

Pockets: Two double-entry chest pockets with mitered corners finish 5" wide x 5½" long. Side entry forms a utility pocket closed with Velcro. Left pocket has a pencil compartment about 1¼" wide. Both pockets have 1¼" box-stitching top and bottom to prevent spreading.

Flaps: Two scalloped flaps that finish 5¼" long, 2⅜" wide at center and 2⅛" wide at sides are secured to front of shirt with two rows of stitching approximately ¼" above top of pocket. Left flap has a pencil opening about 1¼" wide. Flaps are interlined, and a matching button and buttonhole sewn are on each flap.

Flap Closure: Side points of the flaps are secured to the pockets by Velcro fasteners sewn onto the flaps and pockets.

Badge Tab: Reinforced on inside of the shirt by a strip of material, 1½" wide, stitched and folded so that no raw edges show. Reinforcement strip extends from the flap setting stitch to the joining seam at the front of the yoke. There are two small horizontal buttonholes 1¼" apart with the bottom hole 1½" above top of left flap.

Buttons: All buttons, size 20 ligne, are made from high impact melamine and must match fabric.

Shoulder Straps:

Shoulder straps are pointed at the end toward the neck of the shirt. The other end is sewn in the sleeve head seam. Pointed ends are fastened with one matching button. Straps measure 2" at sleeve and taper to 1⅝," and are set about 2" from the collar. Shoulder straps are box-stitched to shoulders with row of cross-stitching 2" from sleeve head seam.

Back: Yoke is composed of an outer piece of the same material as the basic shirt and an inner piece of poplin.

Permanent Creases:

Shirt has permanent military creases. Creases are stitched in shirt only, not through pockets and flaps. One crease in each front extends from hem to joining seam. Three vertical creases are in back; middle crease is on center back line and side creases are spaced equally from the center crease.

Creasing: Pockets and pocket flaps are die-creased to give uniform shape and size.

Interlining: Collar is D331. Flaps are lined with EZ Crease. Top center is lined with non-woven

TexTrop2 Female Short Sleeve Shirt With Zipper
Elbeco Style
Z9810LCN/Z9811LCN/Z9812LCN/Z9813LCN/Z9814LC/Z9819LCN/Z9820LCN

polyester interlining.

Labels: There is a heat-seal label containing brand, size, content and country of origin in the yoke. Care label with cut number is sewn in the inside sideseam. Descriptive product hang tag is attached to front of shirt.

Pressing and Packing:

Shirts are carefully pressed by hand in first class manner and individually packed in polyethylene bags. Shirts are bulk-packed and shipped in strong boxes so as not to be damaged in shipment.

UPC Identification:

A printed UPC bar code tag must be attached to every garment so as to be visible in the package. The UPC bar code must identify style, color and size information so as to be incorporated into an inventory management system. Appropriate support documentation must be available to assist Agency in encoding UPC information.

Code of Conduct:

All garments must be produced in acceptable non-sweatshop working conditions. Verification of acceptable working conditions are made through a completed Code of Conduct document that must be made available to the department. This document should list the location of the manufacturing companies/facilities and address child labor, wage and benefits, overtime, forced labor, freedom of association, harassment or abuse, health and safety, hours of work, non-discrimination, and no retaliation guidelines. Noncompliance of this clause is cause for rejection.

Finished Dimensions:

Size:	30	32	34	36	38	40	42	44	46	48
Bust	38½	39½	41	42½	44	45½	47½	49½	51½	53½
Waist	35½	36½	38	39½	41	42½	44½	46½	48½	50½
Back	27½	27½	28½	28½	28½	28½	28½	28½	29	29

Note: Navy shirt is made to accommodate removable metal buttons throughout.

March 26, 2019

line b

TexTrop2 Male Short Sleeve Shirt with Zipper
Elbeco Style Z3310N/Z3311N/Z3312N/Z3314N/Z3315N/8805N

Style: It is the intention of this department to secure a tailored shirt equal in quality of workmanship and style to the shirt now on display as a sample. Elbeco TexTrop2 brand or pre-approved equal only. Shirt is cut on a form-fitting line, and the shape of the pockets and general style conform to this sample.

Tailoring: It is imperative that this garment is constructed according to the principles set forth in the specifications. All stitches must be of the proper tension and size to avoid puckering after the shirt has been laundered and give best durable press performance. All sewing is with Dacron core thread to match shirt fabric. Collar is single stitched ¼" from edge. Pockets and flaps are single-stitched on the edge.

Fabric: 100% texturized polyester plain-weave with mechanical stretch to insure permanent moisture control, superior breathability, soil resistance, easy care, wrinkle resistance, color matching and color retention. Weight is 5.5 oz. per square yard. Nano moisture wicking technology is applied at the fiber level to capture and pull fluids and perspiration away from skin and spread it over fabric surface for quick evaporation to keep the wearer dry and comfortable.

Colors: White, gray, tan, midnight navy, brown and spruce green

Collar: Convertible collar is one piece, measures 3¼" long at points and 1⅝" wide at back and is constructed of two plies of basic material and one ply of D331 top fuse lining. Collar and inner yoke are lined with matching 65% Dacron polyester/35% cotton, weighing 4.2 oz. per square yard, 106 x 58. Collar lining is banana-shaped. Collar stays are of good quality vinyl that measure 2¾" long x ⅜" wide and are attached to the bottom collar.

Sleeves: To be straight and whole, have 1" hems and finish from shoulder seams as follows:

<u>Size</u>	<u>Finished Length</u>
14 and 14½	9½"
15, 15½, and 16	10"
16½ and above	10½"

Sleeves must be secured to the body of the shirt by a merrow stitch with a safety stitch to properly strengthen the stitch. The same is used on the side closing seams.

Flex Vent: Flex Vent is made from 92% polyester/8% spandex mesh. Diamond-shaped mesh measuring 3¼" wide x 10¼" long is set into the sleeve and body panels at the underarm to allow body heat ventilation, increased mobility and comfort.

Front: Front has a facing 3" wide extending from neckline to the bottom of shirt provided by a turnunder of material. Left front has a lined box pleat 1½" wide, finished, running full length of the shirt and is top-stitched ¼" from both edges. Center front contains seven vertical buttonholes placed ¾" from edge; first at the neck, second 2½" down and the balance 3½" apart.

TexTrop2 Male Short Sleeve Shirt with Zipper
Elbeco Style Z3310N/Z3311N/Z3312N/Z3314N/Z3315N/8805N

Zipper: A 14" nylon zipper is sewn to the front, positioned 1½" below the first button to replace the 2nd, 3rd, 4th and 5th buttons that are sewn on the top center. Neck and first buttons are functional.

Dual Comm Access Openings:

Access openings measuring 1½" are set in each side seam 1" below the bottom tip of the Flex Vent. Pouch-style openings are clean-finished, neatly-concealed and reinforced for durability. Openings are used to thread communication wires under the front of the shirt to keep them out of the way.

Pockets: Two double-entry chest pockets with mitered corners finish 5⅝" wide x 6" long. Side entry forms a utility pocket closed with Velcro. Left pocket has a pencil compartment about 1¼" wide. Both pockets have 1¼" box-pleats stitched from top to bottom to prevent spreading.

Flaps: Two scalloped flaps that finish 5¾" long, 2¾" wide at center and 2½" wide at sides are secured to front of shirt with two rows of stitching approximately ¼" above top of pocket. Left flap has a pencil opening about 1¼" wide. Flaps are interlined, and a matching button and buttonhole are sewn on each flap.

Flap Closure: Side points of the flaps are secured to the pockets by Velcro fasteners sewn onto the flaps and pockets.

Badge Tab: Reinforced on inside of the shirt by a strip of material, 1½" wide, stitched and folded so that no raw edges show. Reinforcement strip extends from the flap setting stitch to the joining seam at the front of the yoke. There are two small horizontal buttonholes 1¼" apart with the bottom hole 1½" above top of left flap.

Buttons: All buttons, size 20 ligne, are made from high impact melamine and must match fabric.

Shoulder Straps:

Shoulder straps are pointed at the end toward the neck of the shirt. The other end is sewn in the sleeve head seam. Pointed ends are fastened with one matching button. Straps measure 2" at sleeve and taper to 1⅜," and are set about 2" from the collar. Shoulder straps are box-stitched to shoulders with a row of cross-stitching 2" from sleeve head seam.

Back: Yoke is composed of an outer piece of the same material as the basic shirt and an inner piece of poplin.

Permanent Creases:

Shirt has permanent military creases. Creases are stitched in shirt only, not through pockets and flaps. One crease in each front extends from hem to joining seam. Three vertical creases are in back; middle crease is on center back line and side creases are spaced equally from the center crease.

Creasing: Pockets and pocket flaps are die-creased to give uniform shape and size.

TexTrop2 Male Short Sleeve Shirt with Zipper
Elbeco Style Z3310N/Z3311N/Z3312N/Z3314N/Z3315N/8805N

Interlining: Collar is D331. Flaps are EZ Crease. Top center is lined with non-woven polyester interlining.

Labels: There is a heat-seal label containing brand, size, content and country of origin in the yoke. Care label with cut number is sewn in the inside sideseam. Descriptive product hang tag is attached to front of shirt.

Pressing and Packing:

Shirts are carefully pressed by hand in first class manner and individually packed in polyethylene bags. Shirts are bulk-packed and shipped in strong boxes so as not to be damaged in shipment.

UPC Identification:

A printed UPC bar code tag must be attached to every garment to be visible in the package. The UPC bar code must identify style, color and size information to be incorporated into an inventory management system. Appropriate support documentation must be available to assist Agency in encoding UPC information.

Code of Conduct:

All garments must be produced in acceptable non-sweatshop working conditions. Verification of acceptable working conditions are made through a completed Code of Conduct document that must be made available to the department. This document should list the location of the manufacturing companies/facilities and address child labor, wage and benefits, overtime, forced labor, freedom of association, harassment or abuse, health and safety, hours of work, non-discrimination, and no retaliation guidelines. Noncompliance of this clause is cause for rejection.

Finished Dimensions:

Size:	14	14½	15	15½	16	16½	17	17½	18	18½
Chest	39	41	43	45	47	49	51	53	55	57
Waist	35	37	39	41	43	45	47	50	53	55
Back Length	32⅝	32¼	32⅜	32⅝	32¾	33	33½	34½	34⅝	35½

March 26, 2019

TexTrop2 Female Long Sleeve Shirt With Zipper
Elbeco Style

line 7

Z9310LCN/Z9311LCN/Z9312LCN/Z9313LCN/Z9314LCN/Z9319LCN/Z9320LCN

- Style:** It is the intention of this department to secure a tailored shirt equal in quality of workmanship and style to the shirt now on display as a sample. Elbeco TexTrop2 brand or pre-approved equal only. Shirt is cut in the Ladies Choice pattern with expanded chest, waist and hip dimensions for a more flattering fit.
- Tailoring:** It is imperative that this garment is constructed according to the principles set forth in the specifications. All stitches must be of the proper tension and size to avoid puckering after the shirt has been laundered and give best durable press performance. All sewing is with Dacron core thread to match shirt fabric. Collar and cuffs are single-stitched $\frac{1}{4}$ " from edge. Pockets and flaps are single-stitched on the edge.
- Fabric:** 100% texturized polyester, plain weave with mechanical stretch to ensure permanent moisture control, superior breathability, soil resistance, easy care, wrinkle resistance, color matching and color retention. Weight is 5.5 oz. per square yard. Nano moisture wicking technology is applied at the fiber level to capture and pull fluids and perspiration away from skin and spread it over fabric surface for quick evaporation to keep the wearer dry and comfortable.
- Colors:** White, gray, tan, blue, midnight navy, French blue and black.
- Collar:** Shape and style of both leaf and stand conform to the TT89 banded collar. Points, medium spread, are approximately 3" long. Back of stand measures 1 $\frac{1}{2}$ ". Stand fastens with one button and one horizontal buttonhole. Leaf is made of three pieces; two pieces of self-cloth and one whole lining, which is fused to the top collar.
- Innerstand and inner yoke are made of matching 65% Dacron polyester/35% cotton, weighing 4.2 oz. per square yard, 106 x 58. Collar stays are of good quality vinyl that measure 2 $\frac{1}{2}$ " long x $\frac{3}{8}$ " wide and are attached to the bottom collar.
- Sleeves:** To be straight and whole. Cuffs are 2 $\frac{5}{8}$ " wide and fasten with two-button adjustable cuffs. There is a single stitch $\frac{7}{16}$ " from top of cuff. Sleeve opening measures 3 $\frac{7}{8}$ " from top of cuff. Top facing for this opening is 1 $\frac{1}{4}$ " wide and bottom facing finishes about $\frac{1}{2}$ " wide.
- Sleeves must be secured to the body of the shirt by a merrow stitch with a safety stitch to properly strengthen the stitch. The same stitch is used on the side closing seams.
- Flex Vent:** Flex Vent is made from 92% polyester/8% spandex mesh. Diamond-shaped mesh measuring 2 $\frac{1}{2}$ " wide x 8" long is set into the sleeve and body panels at the underarm to allow body heat ventilation, increased mobility and comfort.

**TexTrop2 Female Long Sleeve Shirt With Zipper
Elbeco Style**

Z9310LCN/Z9311LCN/Z9312LCN/Z9313LCN/Z9314LCN/Z9319LCN/Z9320LCN

Front: Front has a center facing 1½" wide extending from collar stand to bottom of shirt and is made of the same material as shirt fabric with two rows of stitching, ⅞" apart. Center front contains six vertical buttonholes placed ¾" from edge, 3½" apart. Buttons are securely attached to the left front and correspond to the buttonholes on the right front.

Dual Comm Access Openings:

Access openings measuring 1½" are set in each side seam 1" below the bottom tip of the Flex Vent. Pouch-style openings are clean-finished, neatly concealed and reinforced for durability. Openings are used to thread communication wires under the front of the shirt to keep them out of the way.

Pockets: Two double-entry chest pockets with mitered corners finish 5" wide x 5½" long. Side entry forms a utility pocket closed with Velcro. Left pocket has a pencil compartment about 1¼" wide. Both pockets have 1¼" box-stitching top and bottom to prevent spreading.

Flaps: Two scalloped flaps that finish 5¼" long, 2⅜" wide at center and 2⅛" wide at sides are secured to front of shirt with two rows of stitching approximately ¼" above top of pocket. Left flap has a pencil opening about 1¼" wide. Flaps are interlined, and a matching button and buttonhole are sewn on each flap.

Flap Closure: Side points of the flaps are secured to the pockets by Velcro fasteners sewn onto the flaps and pockets.

Badge Tab: Reinforced on inside of the shirt by a strip of material. 1½" wide, stitched and folded so that no raw edges show. Reinforcement strip extends from the flap setting stitch to the joining seam at the front of the yoke. There are two small horizontal buttonholes 1¼" apart with the bottom hole 1½" above top of left flap.

Buttons: All buttons, size 20 ligne, are made from high impact melamine and must match fabric.

Shoulder Straps:

Shoulder straps are pointed at the end toward the neck of the shirt. The other end is sewn in the sleeve head seam. Pointed ends are fastened with one matching button. Straps measure 2" at sleeve and taper to 1⅜," and are set about 2" from the collar. Shoulder straps are box-stitched to shoulders with a row of cross-stitching 2" from sleeve head seam.

Back: Yoke is composed of an outer piece of the same material as the basic shirt and an inner piece of poplin.

**TexTrop2 Female Long Sleeve Shirt With Zipper
Elbeco Style**

Z9310LCN/Z9311LCN/Z9312LCN/Z9313LCN/Z9314LCN/Z9319LCN/Z9320LCN

Permanent Creases:

Shirt has permanent military creases. Creases are stitched in shirt only, not through pockets and flaps. One crease in each front extends from hem to joining seam. Three vertical creases are in back; middle crease is on center back line and side creases are spaced equally from the center crease.

Creasing: Pockets and pocket flaps are die-creased to give uniform shape and size.

Interlining: Collar is Ck331. Cuffs and band are lined with H-Press interlining. Flaps are EZ Crease. Top center is lined with a non-woven polyester interlining.

Labels: There is a heat-seal label containing brand, size, content and country of origin in the yoke. Care label with cut number is sewn in the inside sideseam. Descriptive product hang tag is attached to front of shirt.

Pressing and Packing:

Shirts are carefully pressed by hand in first class manner and individually packed in polyethylene bags. Shirts are bulk-packed and shipped in strong boxes so as not to be damaged in shipment.

UPC Identification:

A printed UPC bar code tag must be attached to every garment and be visible in the package. The UPC bar code must identify style, color and size information so as to be incorporated into an inventory management system. Appropriate support documentation must be available to assist Agency in encoding UPC information.

Code of Conduct:

All garments must be produced in acceptable non-sweatshop working conditions. Verification of acceptable working conditions are made through a completed Code of Conduct document that must be made available to the department. This document should list the location of the manufacturing companies/facilities and address child labor, wage and benefits, overtime, forced labor, freedom of association, harassment or abuse, health and safety, hours of work, non-discrimination, and no retaliation guidelines. Noncompliance of this clause is cause for rejection.

Finished Dimensions:

Size:	30	32	34	36	38	40	42	44	46	48
Bust	38½	39½	41	42½	44	45½	47½	49½	51½	53½
Waist	35½	36½	38	39½	41	42½	44½	46½	48½	50½
Back	27½	27½	28½	28½	28½	28½	28½	28½	29	29
Sleeve length	30	30	31	32	32	33	33	33	34	34

Note: Navy shirt is made to accommodate removable metal buttons on shoulder straps and pocket flaps.

February 14, 2020

TexTrop2 Male Long Sleeve Shirt with Zipper
Elbeco Style Z310N/Z312N/Z314N/Z315N/8803N

line 8

- Style:** It is the intention of this department to secure a tailored shirt equal in quality of workmanship and style to the shirt now on display as a sample. Elbeco TexTrop2 brand or pre-approved equal only. Shirt is cut on a form-fitting line, and the shape of the pockets and general style conform to this sample.
- Tailoring:** It is imperative that this garment is constructed according to the principles set forth in the specifications. All stitches must be of the proper tension and size to avoid puckering after the shirt has been laundered and give best durable press performance. All sewing is with Dacron core thread to match shirt fabric. Collar and cuffs are single-stitched ¼" from edge. Pockets and flaps are single-stitched on the edge.
- Fabric:** 100% texturized polyester plain-weave with mechanical stretch to ensure permanent moisture control, superior breathability, soil resistance, easy care, wrinkle resistance, color matching and color retention. Weight is 5.5 oz. per square yard. Nano moisture wicking technology is applied at the fiber level to capture and pull fluids and perspiration away from skin and spread it over fabric surface for quick evaporation to keep the wearer dry and comfortable.
- Colors:** White, tan, midnight navy, brown and spruce green
- Collar:** Shape and style of both leaf and stand conform to the TT89 banded collar. Points, medium spread, are approximately 3" long. Back of stand measures 1½". Stand fastens with one button and one horizontal buttonhole. Leaf is made of three pieces; two pieces of self-cloth and one whole lining, which is fused to the top collar.
- Innerstand and inner yoke are made of matching 65% Dacron polyester/35% cotton, weighing 4.2 oz. per square yard, 106 x 58. Collar stays are of good quality vinyl that measure 2½" long x ¾" wide and are attached to the bottom collar.
- Sleeves:** To be straight and whole. Cuffs are 2⅞" wide and fasten with two-button adjustable cuffs. There is a single stitch 7/16" from top of cuff. Sleeve opening measures 4⅞" from top of cuff. Top facing for this opening is 1¼" wide and bottom facing finishes about ½" wide.
- Sleeves must be secured to the body of the shirt by a merrow stitch with a safety stitch to properly strengthen the stitch. The same stitch is used on the side closing seams.
- Flex Vent:** Flex Vent is made from 92% polyester/8% spandex mesh. Diamond-shaped mesh measuring 3¼" wide x 10¼" long is set into the sleeve and body panels at the underarm to allow body heat ventilation, increased mobility, and comfort.
- Front:** Front has a center facing 1½" wide extending from collar stand to bottom of shirt and is made of the same material as shirt fabric with two rows of stitching, ⅞" apart. Center front contains six vertical buttonholes placed ¾" from edge, 3½" apart. Buttons are securely attached to the right front and correspond to the buttonholes on the left front.

TexTrop2 Male Long Sleeve Shirt with Zipper
Elbeco Style Z310N/Z312N/Z314N/Z315N/8803N

Zipper: A 14" nylon zipper is sewn to the front, positioned 1½" below the first button to replace the 2nd, 3rd, 4th and 5th buttons that are sewn on the top center. Neck and first buttons are functional.

Dual Comm Access Openings:

Access openings measuring 1½" are set in each side seam 1" below the bottom tip of the Flex Vent. Pouch-style openings are clean-finished, neatly concealed, and reinforced for durability. Openings are used to thread communication wires under the front of the shirt to keep them out of the way.

Pockets: Two double-entry chest pockets with mitered corners finish 5⅝" wide x 6" long. Side entry forms a utility pocket closed with Velcro. Left pocket has a pencil compartment about 1¼" wide. Both pockets have 1¼" box-pleats stitched from top to bottom to prevent spreading.

Flaps: Two scalloped flaps that finish 5¾" long, 2¾" wide at center and 2½" wide at sides are secured to front of shirt with two rows of stitching approximately ¼" above top of pocket. Left flap has a pencil opening about 1¼" wide. Flaps are interlined, and a matching button and buttonhole are sewn on each flap.

Flap Closure: Side points of the flaps are secured to the pockets by Velcro fasteners sewn onto the flaps and pockets.

Badge Tab: Reinforced on inside of the shirt by a strip of material, 1½" wide, stitched and folded so that no raw edges show. Reinforcement strip extends from the flap setting stitch to the joining seam at the front of the yoke. There are two small horizontal buttonholes 1¼" apart with the bottom hole 1½" above top of left flap.

Buttons: All buttons, size 20 ligne, are made from high impact melamine and must match fabric.

Shoulder Straps:

Shoulder straps are pointed at the end toward the neck of the shirt. The other end is sewn in the sleeve head seam. Pointed ends are fastened with one matching button. Straps measure 2" at sleeve and taper to 1⅜," and are set about 2" from the collar. Shoulder straps are box-stitched to shoulders with a row of cross-stitching 2" from sleeve head seam.

Back: Yoke is composed of an outer piece of the same material as the basic shirt and an inner piece of poplin.

Permanent Creases:

Shirt has permanent military creases. Creases are stitched in shirt only, not through pockets and flaps. One crease in each front extends from hem to joining seam. Three vertical creases are in back; middle crease is on the center line and side creases are spaced equally from the center crease.

TexTrop2 Male Long Sleeve Shirt with Zipper
Elbeco Style Z310N/Z312N/Z314N/Z315N/8803N

- Creasing:** Pockets and pocket flaps are die-creased to give uniform shape and size.
- Interlining:** Collar is D331. Cuffs and bands are lined with M37 H-Press. Flaps are EZ Crease. Top center is lined with a non-woven polyester interlining.
- Labels:** There is a heat-seal label containing brand, size, content, and country of origin in the yoke. Care label with cut number is sewn in the inside sideseam. Descriptive product hang tag is attached to front of shirt.

Pressing and Packing:

Shirts are carefully pressed by hand in first class manner and individually packed in polyethylene bags. Shirts are bulk-packed and shipped in strong boxes so as not to be damaged in shipment.

UPC Identification:

A printed UPC bar code tag must be attached to every garment to be visible in the package. The UPC bar code must identify style, color, and size information to be incorporated into an inventory management system. Appropriate support documentation must be available to assist Agency in encoding UPC information.

Code of Conduct:

All garments must be produced in acceptable non-sweatshop working conditions. Verification of acceptable working conditions are made through a completed Code of Conduct document that must be made available to the department. This document should list the location of the manufacturing companies/facilities and address child labor, wage and benefits, overtime, forced labor, freedom of association, harassment or abuse, health and safety, hours of work, non-discrimination, and no retaliation guidelines. Noncompliance of this clause is cause for rejection.

Finished Dimensions:

Size:	14	14½	15	15½	16	16½	17	17½	18	18½	19	20
Chest	39	41	43	45	47	49	51	53	55	57	59	61
Waist	35	37	39	41	43	45	47	50	53	55	58	62
Back Length	32½	32¼	32¾	32¾	32¾	33	33½	34½	34¾	35½	36	36½

Note: Navy shirt is made to accommodate removable metal buttons on shoulder straps and pocket flaps.

September 17, 2020

UV1 Undervest Short Sleeve Shirt
Elbeco Style UVS114

line 9

Style: UV1 Undervest is a short sleeve shirt with the upper body, sleeves, collar and epaulets made of woven fabric and the lower body made of performance knit fabric. Garment has a three-button placket, flex vents, dual comm access openings and epaulets. All measurements are taken without stretching the material.

Tailoring: It is imperative that this garment is constructed according to the principles set forth in the specifications. All stitches must be of proper tension and size to avoid puckering after the shirt has been laundered and give best durable press performance.

Fabric: Fabric above chest: 100% texturized polyester, tropical weave with mechanical stretch that is easy-care and wrinkle-resistant with excellent color matching and color retention. Weight is 5.0–5.5 oz. per square yard. To insure permanent moisture control and superior breathability, fabric must be treated at fiber level with Nano moisture wicking technology.

Fabric below chest: 100% polyester, featherweight performance knit that is colorfast, abrasion-resistant and pill-proof. Weight is 4.25 oz. per square yard. Permanent Nano moisture wicking takes moisture away from the body for superior comfort, thermal protection, ultimate dryness and enhanced performance. Permanent anti-microbial technology is odor, mildew and bacteria resistant.

Colors: Midnight navy, black, tan, spruce green and brown.

Collar: Convertible collar is one piece, measures 3¼" long at points and 1⅝" wide at back and is constructed of two plies of basic material and one ply of D331 top fuse lining. Collar is lined with matching 65% Dacron polyester/35% cotton, weighing 4.2 oz. per square yard. Collar lining is banana-shaped. Collar stays are of good quality vinyl that measure 2¾" long x ⅜" wide and are attached to the bottom collar.

Sleeves: Made from woven fabric, are straight and whole, have 1" hem and finish from shoulder seams as follows:

Size	Finished Length
S	9½"
M	10"
L – 2XL	10½"
3XL – 4XL	11"

Sleeves must be secured to the body of the shirt by a merrow stitch with a safety stitch to properly strengthen the stitch.

Flex Vent: Patent-pending Flex Vent is made from 92% polyester/8% spandex mesh. Diamond-shaped mesh measuring 3¼" wide x 10¼" long is set into the sleeve and body panels at the underarm to allow body heat ventilation, increased mobility and comfort.

UV1 Undervest Short Sleeve Shirt
Elbeco Style UVS114

Placket: Three-button placket is lined and finishes 1½" wide x 7" long. Bottom of placket has a ½" mic tab sewn horizontally across. Three buttons are evenly spaced on the placket with a horizontal button hole at the neck and vertical button holes at the other two points. Placket laps left over right.

Dual Comm Access Openings:

Access openings measuring 1½" are set in each side seam 1" below the bottom tip of the Flex Vent. Pouch-style openings are clean-finished, neatly-concealed and reinforced for durability. Openings are used to thread communication wires under the front of the shirt to keep them out of the way.

Knit Panel: Panel begins in the front across the chest at the bottom of the placket and extends through the hemline. Panel in the back begins 8" from the back-neckline seam and extends through the hemline.

Seams: Upper woven and lower knit panels are joined with a 4-thread mock-stitch and single-needle top-stitch to prevent puckering while providing a smooth, comfortable seam against the body.

Thread: Thread for seaming, stitching, button holes, and button sewing are cotton-covered polyester core. Thread is stabilized so as not to shrink in boiling water more than 1.5%.

Shoulder Straps:

Lined shoulder straps are pointed at the end toward the neck of the shirt. The other end is sewn in the sleeve head seam. Straps are non-functional, fastened with one matching button. A small cut-through under the button accommodates removable metal buttons. Straps measure 2" at sleeve and taper to 1⅜," and are set about ½" from the collar. Shoulder straps are box-stitched to shoulders with a row of cross-stitching 2⅛" from sleeve head seam.

Back/Shoulder:

One-piece yoke has a top-stitch on the outer ply. Front and back panels are joined with a 4-thread mock-stitch and single-needle top-stitch

Bottom Hem: Hem is 1" deep and has a two-needle cover-stitch.

Labels: Each garment has a heat-seal brand label containing size, country of origin, care and content. A branded hang tag is attached to the garment.

Pressing and Packing:

Shirts are carefully completed in first class manner and individually packed in polyethylene bags. Shirts are bulk-packed.

UV1 Undervest Short Sleeve Shirt
Elbeco Style UVS114

UPC Identification:

A printed UPC bar code tag must be attached to every garment. The UPC bar code must identify style, color and size information so as to be incorporated into an inventory management system. Appropriate support documentation must be available to assist the Agency in encoding UPC information.

Code of Conduct:

All garments must be produced in acceptable non-sweatshop working conditions. Verification of acceptable working conditions are made through a completed Code of Conduct document that must be made available to the department. This document should list the location of the manufacturing companies/facilities and address child labor, wage and benefits, overtime, forced labor, freedom of association, harassment or abuse, health and safety, hours of work, non-discrimination, and no retaliation guidelines. Noncompliance of this clause is cause for rejection.

Finished Dimensions:

Size:	S	M	L	XL	2XL	3XL	4XL
Chest	41	45	49	53	57	61	65
Waist	37	41	45	50	55	60	63
Back Length	29	30	31	32	33	34	35

October 11, 2017

UV1 Undervest Long Sleeve Shirt
Elbeco Style UVS113

line 10

- Design:** The UV1 Undervest is a long sleeve shirt with the upper body, sleeves, collar and epaulets made of woven fabric and the lower body made of performance knit fabric. Garment has a three-button placket, flex vents, dual comm access openings and epaulets. All measurements are taken without stretching the material.
- Tailoring:** It is imperative that this garment is constructed according to the principles set forth in the specifications. All stitches must be of proper tension and size to avoid puckering after the shirt has been laundered and give best durable press performance.
- Fabric:** Fabric above chest: 100% texturized polyester, tropical weave with mechanical stretch that is easy-care and wrinkle-resistant with excellent color matching and color retention. Weight is 5.5 oz. per square yard. To insure permanent moisture control and superior breathability, fabric must be treated at fiber level with Nano moisture wicking technology.
- Fabric below chest: 100% polyester, featherweight performance knit that is colorfast, abrasion-resistant and pill-proof. Weight is 4.25 oz. per square yard. Permanent Nano moisture wicking takes moisture away from the body for superior comfort, thermal protection, ultimate dryness and enhanced performance. Permanent anti-microbial technology is odor, mildew and bacteria resistant.
- Colors:** Black, midnight navy, tan, spruce green and brown.
- Collar:** Banded dress collar has a leaf made of two pieces of self-cloth and one whole lining, which is fused to the top collar. Points are approximately 3" long. Back of stand measures 1½".
- Innerstand is made of matching 65% Dacron polyester/35% cotton, weighing 4.2 oz. per square yard. Collar stays are of good quality vinyl that measure 2¾" long x ⅜" wide and are attached to the bottom collar.
- Sleeves:** To be straight and whole. Cuffs are 2⅞" wide and fasten with two buttons and one button hole for adjustable cuffs. There is a single stitch along top of cuff. Sleeve opening measures 5¼" from top of cuff. Top facing for this opening is 1¼" wide and bottom facing finishes about ½" wide. Button is placed on sleeve opening with corresponding button hole.
- Sleeves must be secured to the body of the shirt by a merrow stitch with a safety stitch to properly strengthen the stitch.
- Flex Vent:** Patent-pending Flex Vent is made from 92% polyester/8% spandex mesh. Diamond-shaped mesh measuring 3¼" wide x 10¼" long is set into the sleeve and body panels at the underarm to allow body heat ventilation, increased mobility and comfort.

UV1 Undervest Long Sleeve Shirt Elbeco Style UVS113

Placket: Three-button placket is lined and finishes 1½" wide x 7" long. Bottom of placket has a ½" mic loop sewn horizontally across. Three buttons are evenly spaced on the placket with a horizontal button hole at the neck and vertical button holes at the other two points. Placket laps left over right.

Dual Comm Access Openings:

Access openings measuring 1½" are set in each side seam 1" below the bottom tip of the Flex Vent. Pouch-style openings are clean-finished, neatly-concealed and reinforced for durability. Openings are used to thread communication wires under the front of the shirt to keep them out of the way.

Knit Panel: Panel begins in the front across the chest at the bottom of the placket and extends through the hemline. Panel in the back begins 8" from the back-neckline seam and extends through the hemline.

Seams: Upper woven and lower knit panels are joined with a 4-thread mock-stitch and single-needle top-stitch to prevent puckering while providing a smooth, comfortable seam against the body.

Thread: Thread for seaming, stitching, button holes, and button sewing is cotton-covered polyester core. Thread is stabilized so as not to shrink in boiling water more than 1.5%.

Shoulder Straps:

Lined shoulder straps are pointed at the end toward the neck of the shirt. The other end is sewn in the sleeve head seam. Straps are non-functional, fastened with one matching button. A small cut-through under the button accommodates removable metal buttons. Straps measure 2" at sleeve and taper to 1⅜," and are set about ½" from the collar. Shoulder straps are box-stitched to shoulders with row of cross-stitching 2⅛" from sleeve head seam.

Back/Shoulder:

One-piece yoke has a top-stitch on the outer ply. Front and back panels are joined with a 4-thread mock-stitch and single-needle top-stitch

Bottom Hem: Hem is 1" deep and has a two-needle cover stitch.

Labels: Each garment has a heat-seal brand label containing size, country of origin, care and content. A branded hang tag is attached to the garment.

Pressing and Packing:

Shirts are carefully completed in first class manner and individually packed in polyethylene bags. Shirts are bulk packed.

**UV1 Undervest Long Sleeve Shirt
Elbeco Style UVS113**

UPC Identification:

A printed UPC bar code tag must be attached to every garment. The UPC bar code must identify style, color and size information so as to be incorporated into an inventory management system. Appropriate support documentation must be available to assist the Agency in encoding UPC information.

Code of Conduct:

All garments must be produced in acceptable non-sweatshop working conditions. Verification of acceptable working conditions are made through a completed Code of Conduct document that must be made available to the department. This document should list the location of the manufacturing companies/facilities and address child labor, wage and benefits, overtime, forced labor, freedom of association, harassment or abuse, health and safety, hours of work, non-discrimination, and no retaliation guidelines. Noncompliance of this clause is cause for rejection.

Finished Dimensions:

Neck Size:	14-14½	15-15½	16-16½	17-17½	18-18½	19-20	21-22
Chest	41	45	49	53	57	63	71
Waist	37	41	45	50	55	63	71
Back Length	29	30	31	32	33	34	36
Sleeve Length	Combination Sleeve:		32/33 is 33½				
			34/35 is 35½				
			36/37 is 37½				

October 11, 2017

Tek3 Female Cargo Pants
Elbeco Style E9615LCN *line 11*

- Style:** Pants are made with the Ladies Choice pattern, featuring a contour waistband with elastic side panels, shortened rise and reshaped hip and seat. Pants have a plain front with quarter-top front pockets, two back pockets, two club pockets and two double-entry cargo pockets.
- Fabric:** Elbeco Tek2, 65% polyester/35% combed cotton, two-ply, vat-dyed twill weave with 6-8% engineered filling stretch, weighing 7 oz. per square yard. A continuous dyeing process enhances the color retention of the fabric. Fabric must be treated at the fiber level with Nano fluid repellency technology for permanent superior fluid resistance, fabric appearance and durability while maintaining original fabric breathability. Color: brown.
- Pockets**
- Front:** Front pocket openings are a minimum 6½" and 6" deep from the bottom of each opening. Pockets are stitched, turned, and restitched. Inside facing is a separate piece of self-material finishing no less than 1¼" wide.
- Back:** Back pockets have minimum openings of 5" on sizes 8 and below, 5½" on sizes 10 and above and are 6" deep. They are made with a Reese PW automatic machine and finished on the outside with an exposed top and bottom cord. Both pockets have a tab and button. Front pockets have straight bar-tacks, and back pockets have triangular bar-tacks.
- Club:** Two club pockets, located 5¼" below the hip pockets, are 2" from the sideseams with minimum openings of 3½" and minimum depth of 8". Pocketing material is the same as side and hip pockets. Pockets are constructed using the double-welt method on a Reece PW machine.
- Side:** Two double-entry side pockets are sewn to the outside leg seams and centered 9½" below the bottom of the waistband on sizes 8 and below, and 10½" on sizes 10 and above. Each pocket is constructed of shell fabric, the top edge-bound with a poly/cotton black binding, measures 7" wide x 8½" long, features an inverted center pleat measuring 1" wide, and is edge-stitched for stability. A 6" strip of 3M reflective tape is sewn to the top edge of the pocket. Two 1" x 1" soft Velcro strips are sewn on top of the ends of the reflective tape so that a minimum of 4" of tape is visible.
- A knife/PDA pocket that measures 3½" wide x 6" long is sewn on the outside of the cargo pocket from the pleat towards the rear of the trouser. Pocket has a lined hem and Velcro closure.
- A two-compartment internal utility pocket and tunnel are set in the back of each cargo pocket. One compartment measures 3½" x 4½" with a finished bottom, and the other compartment measures 2¾" x 6" deep and is open at the bottom to accommodate flashlights of different lengths. A PDA/utility pocket measuring 4½" x 4½" is set inside the front of each cargo pocket.

Tek3 Female Cargo Pants
Elbeco Style E9615LCN

- Flaps:** Pocket flaps measure 7" wide x 2¾" deep and are made of two plies of shell fabric and one ply of interlining. Top edge of each flap is sewn across the top of the outer pocket with its sides secured to the pocket with two hard Velcro strips sewn to the inner ply of flap to align with the soft Velcro strips sewn to the pocket. Zippers are sewn behind the inner pockets to the trouser legs, positioned 1" below top of flaps, to create concealed pockets.
- Pocketing:** To be black 65% polyester/35% cotton with a minimum thread count of 68 x 54, weighing 4.3 oz. per yard.
- Waistband:** Ladies Choice construction provides superior comfort and performance. Curtain, attached with a rocap machine, is made of black, bias-cut, cotton-blended twill and has ½" shirt retention strip. Inside the waistband are two pieces of breathable non-woven stretch canvas for support. Waistband is fused for additional support.
- Finished waistband is 2" wide and closed with a crush-proof hook and eye, the eye being bar-tacked for stability. There are ¾" elastic sewn into each side of the waistband for superior fit. Finished waistband is set on and stitched below the lower edge through the outer fabric and the waistband curtain. No alternative waistband is acceptable.
- Belt Loops:** There are a minimum of five lined belt loops on sizes 8 and below, and a minimum of seven on sizes 10 and above. Each loop is 7/8" wide of double-thickness with stitching on a face side 3/8" from each edge. Except for the back loop, which is tacked on, all loops are sewn into the bottom of the waistband and into the rocap. They accommodate a 1½" belt.
- Inside Trim:** Right fly lining is the same fabric and color as the waistband curtain. A non-woven interlining is sewn to the fly for additional stability and strength. Right fly lining is sewn to the left fly below the zipper.
- There is a triple-strength crotch reinforcement to prevent seam failure in the crotch and inseam area. Crotch is secured with two rows of stitching. One row is on the inside of the trouser, then turned, and an additional row is sewn on the outside of trouser.
- Zippers:** Trousers are closed with a gun metal zipper and have a brass bottom stop at the base of the zipper chain. A straight bar-tack is sewn through the outside of the garment to the inside at the bottom of the fly. It is sewn through the zipper tape, the right and left fly, and the right fly lining. Right and left fly are joined by an additional bar-tack located below the bottom zipper stop on the inside of the trouser. Additional zippers are sewn behind each side pocket flap per specification.
- Creasing:** Front and back creases in both legs must be applied via a pneumatically controlled application of Creaset silicone sealant, specially formulated for technologically enhanced fabrics to give permanency to the creases for the life of the garment.

Tek3 Female Cargo Pants Elbeco Style E9615LCN

Seams: Entire trouser is seamed with polyester core or 100% polyester spun thread. Seat seam is stitched with a tandem needle seat seaming machine.

Labels: A Tek2 woven label is sewn in the left hip pocket bag. Woven size label is sewn next to the main label with a care and content label sewn below it. Outside waistband label is marked with lot number, size, fiber content, cut number and UPC Identification.

Finishing and Pressing:

All loose threads are removed. Trousers must be pressed completely and properly with sideseam, inseam and seat seam pressed open. There must be a Jetclip attached to the top fly of the finished trouser.

UPC Identification:

A printed UPC bar code tag must be attached to every garment so as to be visible in the package. The UPC bar code must identify style, color and size information so as to be incorporated into an inventory management system. Appropriate support documentation must be available to assist Agency in encoding UPC information.

Code of Conduct:

All garments must be produced in acceptable non-sweatshop working conditions. Verification of acceptable working conditions are made through a completed Code of Conduct document that must be made available to the department. This document should list the location of the manufacturing companies/facilities and address child labor, wage and benefits, overtime, forced labor, freedom of association, harassment or abuse, health and safety, hours of work, non-discrimination, and no retaliation guidelines. Noncompliance of this clause is cause for rejection.

Finished Dimensions:

Size:	2	4	6	8	10	12
Waist relaxed	26½	27½	28½	29½	30½	32
Waist stretched	29½	30½	31½	32½	33½	35
Seat	36¼	37¼	38¼	39¼	40¼	41¼
Front Rise	8	8¼	8½	8¾	9	9¼
Back Rise	14⅝	14⅞	15⅞	15¾	15⅝	15⅞
Inseam	35	35	35	35	35	35

Size:	14	16	18	20	22	24
Waist relaxed	33½	35	37	39	41	43
Waist stretched	36½	38	40	42	44	46
Seat	43¼	44¾	46¾	48¾	50¾	52¾
Front Rise	9½	9¾	10	10¼	10½	10¾
Back Rise	16⅞	16¾	16⅝	16⅞	17⅞	17¾
Inseam	35	35	35	35	35	35

April 29, 2015

Tek3 Male Cargo Pants
Elbeco Style E615RN *line 12*

- Style:** Pants are made with the Essential Fit uniform pattern with a covert waistband, plain front with quarter-top front pockets, two back pockets, two rear utility pockets and two double-entry cargo pockets.
- Fabric:** Elbeco Tek3, 65% polyester/35% combed cotton, two-ply, vat-dyed twill weave with 6-8% engineered filling stretch, weighing 7 oz. per square yard. A continuous dyeing process enhances the color retention of the fabric. Fabric must be treated at the fiber level with Nano fluid repellency technology for permanent superior fluid resistance, fabric appearance and durability while maintaining original fabric breathability. Color: brown.
- Pockets**
- Front:** Front pocket openings are a minimum 6½" and 6" deep from the bottom of each opening. Pockets are stitched, turned, and restitched. Inside facing is a separate piece of self-material finishing no less than 1¼" wide.
- Back:** Back pockets have minimum openings of 6" and 6" deep. They are made with a Reese PW automatic machine and finished on the outside with an exposed top and bottom cord. Both pockets have a tab and button. Front pockets have straight bar-tacks, and back pockets have triangular bar-tacks.
- Utility:** Two utility pockets, located 5¼" below the hip pockets, are 2" from the sideseams with minimum openings of 3½" and minimum depth of 8". Pocketing material is the same as side and hip pockets. Pockets are constructed using the double-welt method on a Reece PW machine.
- Side:** Two double-entry side pockets are sewn to the outside leg seams so that each pocket flap is centered 10½" below the bottom of the waistband. Each pocket is constructed of shell fabric, the top edge bound with a poly/cotton black binding, measures 7" wide x 8½" long, features an inverted center pleat measuring 1" wide, and is edge-stitched for stability. A 3M reflective stripe transfer 1" x 6" is heat-sealed to the top edge of the pocket. Two 1" x 1" soft Velcro strips are sewn on top of the ends of the reflective tape so that a minimum of 4" of tape is visible.
- A knife/PDA pocket is sewn on the outside of the cargo pocket from the pleat towards the rear of the trouser. Pocket has a lined hem and Velcro closure.
- A two-compartment internal utility pocket and tunnel are set in the back of each cargo pocket. One compartment measures 3½" x 4½" with a finished bottom, and the other compartment measures 2¾" x 6" deep and is open at the bottom to accommodate flashlights of different lengths. A PDA/utility pocket measuring 4½" x 4½" is set inside the front of each cargo pocket.

Tek3 Male Cargo Pants Elbeco Style E615RN

Flaps: Pocket flaps measure 7" wide x 2¾" deep and are made of two plies of shell fabric and one ply of interlining. Top edge of each flap is sewn across the top of the outer pocket with its sides secured to the pocket with two hard Velcro strips sewn to the inner ply of flap to align with the soft Velcro strips sewn to the pocket. Zippers are sewn behind the inner pockets to the trouser legs, positioned 1" below top of flaps, to create concealed pockets.

Pocketing: To be black 65% polyester/35% cotton with a minimum thread count of 70 x 48, weighing 4.3 oz. per square yard.

Waistband: Covert waistband contains a hidden elastic extension, providing up to 3" of additional stretch. Front of the outer waistband tapers through the covert opening at the top of the front pocket opening. The 1¼" wide elastic extends from the end of the taper through the waistband behind the sideseam. All stress points are bar-tacked.

Inner waistband is a DutyFit waistband, which provides additional stretch to the wearer's exact size while providing permanent recovery memory. DutyFit waistband is continuous on the inside of the waistband to provide additional support and recovery to the waistband extension. There are no split openings in the inside curtain.

Inside waistband is made with black wrapped woven elastane with a ½" exposed gripper track in the center for shirt retention. It measures 2½" and is attached with a rocap machine. Woven elastic banrol stiffener measuring 1" is sewn into the entire waistband to provide additional support.

Waistband is constructed using the closed method and measures 2" wide when finished. Waistband closure is accomplished with a double crush-proof hook and eye, bar-tacked for stability. Hooks and eyes are reinforced with stays made of a non-woven fabric that are anchored by the top-stitching for the fly facing and curtain. Top-stitching must be to the top of the waistband. Waistband must have a crack stitch for added strength. No alternative waistband is acceptable.

Belt Loops: There are a minimum of seven lined belt loops on sizes 49 and below and a minimum of nine loops on sizes 50 and over. Each loop is 1" wide of double-thickness with stitching on a face side ⅜" from each edge. Except for the back loop, which is tacked on, all loops are sewn into the bottom of the waistband and into the rocap. They accommodate a 1⅝" belt.

Inner Fly/Crotch:

Right fly and front crotch linings are the same fabric and color as the waistband curtain. A non-woven interlining is sewn to the fly for additional stability and strength. Right fly lining is sewn to the left fly below the zipper and continues centered on the join seam across the inseam and ends 1" onto the backseam. A separate French fly made of the outer fabric is sewn to the inside right fly.

Tek3 Male Cargo Pants Elbeco Style E615RN

There is a triple-strength crotch reinforcement to prevent seam failure in the crotch and inseam area. Crotch is secured with two rows of stitching. One row is on the inside of the trouser, then turned, and an additional row is sewn on the outside of trouser

Zippers: Trousers are closed with a gun metal zipper and have a brass bottom stop at the base of the zipper chain. A straight bar-tack is sewn through the outside of the garment to the inside at the bottom of the fly. It is sewn through the zipper tape, the right and left fly, and the right fly lining. Right and left fly are joined by an additional bar-tack located below the bottom zipper stop on the inside of the trouser. Additional zippers are sewn behind each side pocket flap per specification.

Creasing: Front and back creases in both trouser legs must be applied via a pneumatically controlled application of Creaset silicone sealant, specially formulated for technologically enhanced fabrics to give permanency to the creases for the life of the garment.

Seams: Entire trouser is seamed with polyester core or 100% polyester spun thread. Seat seam is stitched with a tandem needle seat seaming machine.

Labels: There is a brand woven label sewn in the left hip pocket bag. A woven size label is sewn next to the main label with a care and content label sewn below that label. An outside waistband label is marked with lot number, size, fiber content, cut number and UPC Identification.

Finishing and Pressing:

All loose threads are removed. Trousers must be pressed completely and properly with sideseam, inseam and seat seam pressed open. There must be a Jetclip attached to the top fly of the finished trouser.

UPC Identification:

A printed UPC bar code tag must be attached to every garment so as to be visible in the package. The UPC bar code must identify style, color and size information so as to be incorporated into an inventory management system. Appropriate support documentation must be available to assist Agency in encoding UPC information.

Code of Conduct:

All garments must be produced in acceptable non-sweatshop working conditions. Verification of acceptable working conditions are made through a completed Code of Conduct document that must be made available to the department. This document should list the location of the manufacturing companies/facilities and address child labor, wage and benefits, overtime, forced labor, freedom of association, harassment or abuse, health and safety, hours of work, non-discrimination, and no retaliation guidelines. Noncompliance of this clause is cause for rejection.

**Tek3 Male Cargo Pants
Elbeco Style E615RN**

Finished Dimensions:

Size:	28	29	30	31	32	33	34	35	36
Waist relaxed	28½	29½	30½	31½	32½	33½	34½	35½	36½
Waist stretched	31½	32½	33½	34½	35½	36½	37½	38½	39½
Seat	38 ¹³ / ₁₆	40 ¹¹ / ₁₆	41 ⁵ / ₈	42 ⁹ / ₁₆	43½	44 ³ / ₈	45 ³ / ₈	46 ⁵ / ₁₆	47¼
Front Rise	9¼	9 ³ / ₈	9½	9 ⁵ / ₈	9¾	9 ⁷ / ₈	10	10 ¹ / ₈	10 ⁵ / ₁₆
Back Rise	14¾	14 ⁷ / ₈	15	15 ¹ / ₈	15¼	15 ³ / ₈	15½	15 ⁵ / ₈	15 ¹³ / ₁₆
Thigh	26 ⁷ / ₁₆	27 ¹ / ₈	27½	27 ¹⁵ / ₁₆	28 ³ / ₈	28 ¹³ / ₁₆	29¼	29 ⁵ / ₈	30
Knee	20¾	21	21¼	21½	21¾	22	22¼	22½	22¾
Bottom	18 ³ / ₈	18½	18 ⁵ / ₈	18¾	18 ⁷ / ₈	19	19 ¹ / ₈	19¼	19 ³ / ₈
Inseam	37 ³ / ₈	37 ³ / ₈	37 ³ / ₈	37 ³ / ₈	37 ³ / ₈	37 ³ / ₈	37 ³ / ₈	37 ³ / ₈	37 ³ / ₈

Size:	37	38	40	42	44	46	48	50	52
Waist relaxed	37½	38½	40½	42½	44½	46½	48½	50½	52½
Waist stretched	40½	41½	43½	45½	47½	49½	51½	53½	55½
Seat	48	48¾	50 ⁵ / ₁₆	51 ⁷ / ₈	53 ⁷ / ₁₆	55	56 ⁹ / ₁₆	58 ¹¹ / ₁₆	60
Front Rise	10½	10 ⁵ / ₈	11	11 ⁵ / ₁₆	11 ¹¹ / ₁₆	12	12 ³ / ₈	12 ⁵ / ₈	13
Back Rise	16	16 ¹ / ₈	16½	16 ¹³ / ₁₆	17 ³ / ₁₆	17 ⁹ / ₁₆	17 ⁷ / ₈	18¼	18 ⁹ / ₁₆
Thigh	30 ⁹ / ₁₆	30 ¹⁵ / ₁₆	32	32 ⁵ / ₈	33 ¹³ / ₁₆	34 ¹⁵ / ₁₆	35 ⁹ / ₁₆	36½	37 ³ / ₈
Knee	23	23¼	23¾	24¼	24¾	25¼	25¾	26¼	26¾
Bottom	19½	19 ⁵ / ₈	19 ⁷ / ₈	20 ¹ / ₈	20 ³ / ₈	20 ⁵ / ₈	20 ⁷ / ₈	21 ¹ / ₈	21 ³ / ₈
Inseam	37 ³ / ₈	37 ³ / ₈	37 ³ / ₈	37 ³ / ₈	37 ³ / ₈	37 ³ / ₈	37 ³ / ₈	37 ³ / ₈	37 ³ / ₈

December 12, 2014

line 13

READY WHEN YOU ARE®

The best-fitting, most comfortable tactical pants on the market, our 24-7 Series® Original Tactical Pants, are built with an engineered dimensional fit that is ideal for wear on and off duty. Its deep cargo pockets can accommodate a concealed handgun and all your EDC gear. Reinforced knees also allow the addition of protective pads (sold separately), making these pants tough to beat for utility. All-day comfort comes from our IWB-friendly slider waistband and breathable 6.5-ounce 65/35 polyester/cotton rip-stop fabric and its DWR treatment repels water and stains. These pants are a favorite of everyone, from professional law enforcement to civilians who need the best performance when they venture into the field.;

Features

1. TRU-SPEC® original PRYM snap with brass YKK® zipper
2. Comfort fit slider waistband
3. 2" wide belt loops
4. Extra deep front pockets
5. Two knife/accessory pockets
6. Expandable back pockets with hook & loop closure
7. Two cargo pockets with hook & loop closure and bellowed side gussets that contain 2-internal magazine compartments
8. Utility pocket on the outside of cargo pockets
9. Double reinforced knee with built-in knee pad pockets

Imported

Sizes:

28 - 44 with 30", 32" & 34" inseams

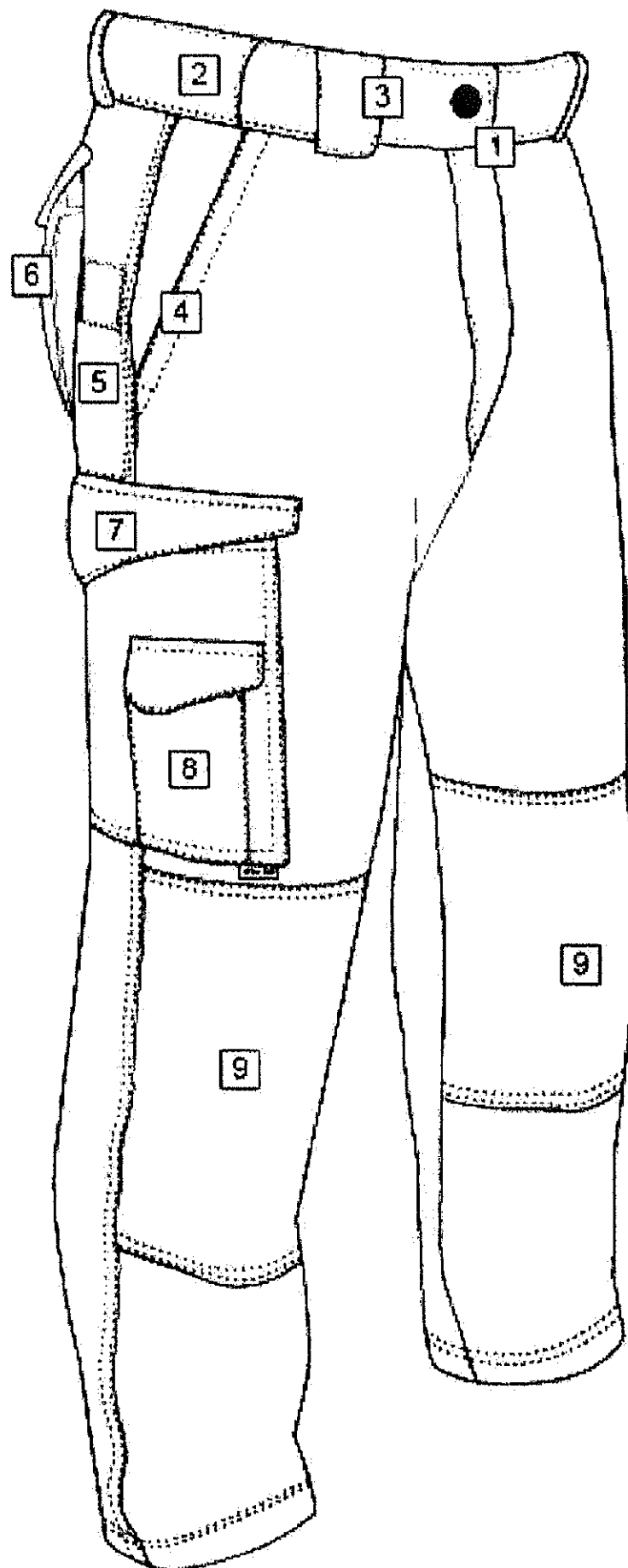
28 - 54 with unhemmed inseam of 37"

Note - color shading will occur on products constructed of different fabric blends. To ensure a matching set please purchase all shirts, jackets and pants in the same fabric.

All of the 24-7 Series® pants with a comfort slider waistband run about one size larger.

24-7 Series® pocket design is a registered trademark of ATLANCO®.





**SPECIFICATION FOR THE
TYPHOON RAIN JACKET**

line 14

General Design

Water-proof rain Jacket with front zipper design, front storm placket with snap closure on both the black and lime side, reversible from black to HI VIZ lime-yellow. Raglan shoulder sleeve design with an adjustable cuff, slash-through side openings with interior pockets with welts on both the black and lime side, telescopic collar, and concealable drop in hood, Plain hem on the bottom. Zippered side vents with side tabs, microphone tabs and badge holder on both sides. **ANSI/ISEA 107:2015** Standard construction with 2-1/2" retro-reflective tape with 2" silver centered on the tape with black 1/4" printed on the edges sewn. Reference product is Gerber's identification number **70W3/L TYPHOON RAIN JACKET**. Color in Black reverses to Lime-yellow.

I. FABRIC/MATERIALS

- Outer shell:** 70DX160D/228T Nylon Taslan woven. Water repellent treatment & Hydrophilic Breathable PU Coating. Weight (CM) 160G/MXM → 5%
- Outer shell:** ANSI 100% polyester, color lime-yellow.
- Fasteners:** All fasteners shall be as follows or equivalent:
- Zippers:** Front zipper, #5, Delrin, 29", YKK, with reversible slider.
Collar zipper, #3 size, 8", coil with one slider.
Sleeve zipper, #3 size, 8", coil with one slider.
- Snap:** The snaps shall be universal prong snaps that have been oxidized to prevent rusting, Gypsy style.
- Eyelets:** Black, metal, small.
- Elastic:** Natural color, 1-1/2" wide dry clean and washable
- Seam seal tape:** Composite seam sealing tape that is compatible to the composite fabric, 7/8" wide.
- Velcro:** Black, 1" wide hook and loop.
- Reflective Tape:** 3M SCOTCHLITE, 8710, 2-1/2" wide with 2" silver tape centered over black ribbon, **sewn on application**.
- Thread:** All thread shall be polyester thread with a wrap with 36 strength in a 50 size or better.

II. DESIGN FEATURES

FRONT: There shall be six large gypsy snap fasteners set evenly; there shall be a reversible front zipper going to the top of collar. The snap fasteners will be set approximately 6-1/2" apart, except the top snap will be set 1" from the placket edge. There shall be a single placket on the outside of the jacket and a single placket on the inside of the jacket, both plackets shall measure 2-1/2" wide. The bottom hem of the coat shall be approximately 3/4" wide.

There shall microphone tabs set on the left and right chest on both the black and lime side; and measure 1" by 2-1/4".

The badge holder shall measure 1" by 2-1/4", the eyelets shall be set 1-1/8" apart, center to center. Attached loose to the hangtag, both colors.

POCKETS: Slash-through side openings with interior pockets on both the black and lime side, pocket opening measures 10-1/2" to permit easy access to trouser pockets or pistol. The pocket shall have a depth of about 7". The pocket welts shall measure 2" wide by 11" long, bar-tacked and interlined.

COLLAR: The collar shall be a telescopic design, measures 4-1/4" at the points and at the center back. Telescopic collar design that measures 4-1/4" wide. Both collars are to be in black color.

There shall be a Concealable Hood (DROP DOWN) thru an 8" coil zipper that is sewn on the under collar. Velcro storm closure on hood with draw-cord and barrel clips.

BACK DESIGN: The back shall be a full cut, raglan design.

SLEEVES: Sleeves shall be a raglan design. There shall be an underarm sleeve zipper on each sleeve; the zipper shall be an 8" coil zipper on the lime side only.

CUFF: There shall be a one-piece cuff design made out of self-material that shall measure 2" wide. Half of the cuffs shall be heavy duty elastic stretched with 1-1/2" elastic and sewn with double needle. There shall be cuff tabs that measure 1-1/2" wide and taper to 1" wide, and shall be 3-1/2" long with a Velcro hook set at the tapered end that shall attach to the Velcro loop set on the cuff for adjustments.

SIDE VENTS: There shall be side vents with a 15" zipper opening for easy access to the duty weapon. The zipper shall be reversible for accessibility from either side of the jacket. There shall be a side tab that is sewn to the side hem bottom of the front and anchors across the side vent to the back.

FACINGS: On the fluorescent lime side there shall be facings made out of the outer shell fabric. There shall be upper front facings that measure 3-1/2" at the widest and tapers to a point in color black upto the first reflective stripe the rest of the facing shall be lime color.

REFLECTION TAPE: On the fluorescent side of the raincoat there will be 3M SCOTCHLITE 2-1/4" retro-reflective tape with 2" silver centered on the tape with black 1/4" Printed on the edges all around the front chest, plackets and across the back approximately 2" under the armhole seam. A second stripe shall be set on the lower front, across the plackets and back. There shall be an upper and lower stripe set on each sleeve.

These stripes shall align to the body stripes.

SEAM SEALING: All external seams and sewing are to be seam sealed with a 7/8" wide seam sealing tape that is set with a hot air seam sealing machine. Seams are to be randomly tested with a sutfor tester 3 psi for 3 minutes. A log shall be maintained to record the testing results.

LABELS: Each garment shall have a GERBER label and an ANSI/ISEA 107:2015 STANDARD.

HANGTAGS: Each garment shall have a GERBER and a 3M SCOTCHLITE hangtag. On the back side of the GERBER hangtag there shall be a sticker label with the style name, the ID# and the size of the garment.

GUARANTEE: Each garment shall be guaranteed to be free from defects and the factory workmanship shall be guaranteed for five years. This guarantee shall be evidenced by a hangtag on each garment.

SILENCE OF SPECIFICATION: The apparent silence of this specification as to any details or the omission from it of a detail description concerning any point shall be interpreted as meaning that only the best commercial practices are to prevail and only materials and workmanship of first quality to be used.

III. MEASUREMENTS

SIZING: The manufacturer shall be capable of providing all sizes for men and women, including any special size requirements. The manufacturer shall have a company representative or authorized dealer available to assist with the fittings of the garments at no additional cost.

The following sizes have been established as a guideline for this order:

SIZE CHART

SIZE	FINISHED CHEST	BACK LENGTH	SLEEVE INSEAM
X-SMALL (32-34)	46	36	21-1/2
SMALL (36-38)	50	36	21-1/2
MEDIUM (40-42)	54	36	21-1/2
LARGE (44-46)	58	36	21-1/2
X-LARGE (48-50)	62	36	21-1/2
XX-LARGE (52-54)	66	36	21-1/2
XXX-LARGE (56-58)	70	36	21-1/2
XXXX-LARGE (56-58)	74	36	21-1/2
XXXXX-LARGE (56-58)	74	36	21-1/2
LONG LENGTHS	+1"	+1"	+1"
X-LONG LENGTHS	+1"	+2"	+2"

View PDF Print Email

line 15

PORT AUTHORITY.**Port Authority® Glacier® Soft Shell Jacket. J790**

One of our most popular jackets, the Glacier® is constructed from a polyester stretch woven shell, which is then bonded to polyester microfleece with an added laminate film insert to repel water. The result is a wind-resistant, water-resistant jacket with stretch that's perfect for corporate or weekend wear.

- 96/4 poly/spandex stretch woven shell
- 100% polyester microfleece lining
- 1000MM fabric waterproof rating
- 1000G/M² fabric breathability rating
- Two-way zipper
- Zippered chest pocket
- Front zippered pockets
- Binding at cuffs
- Open hem

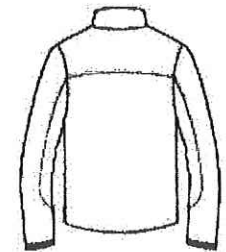
CARE INSTRUCTIONS

Machine wash cold, Do not dry clean, iron, bleach or tumble dry.

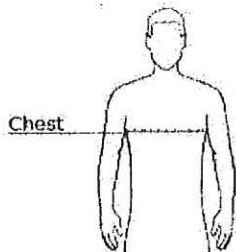
Tips For Effectively Screen Printing Polyester Fabrics



front



back

HOW TO MEASURE**CHEST WIDTH**

Measure under the arm and around the fullest part of the chest with arms down, keeping tape horizontal.

SIZE CHART

	XS	S	M	L	XL	2XL	3XL	4XL
Chest:	32-34	35-37	38-40	41-43	44-46	47-49	50-53	54-57

COLOR INFORMATIONAtlantic Blue/
Chrome

Black/ Chrome

Smoke Gray/
Chrome

View PDF Print Email

line 15

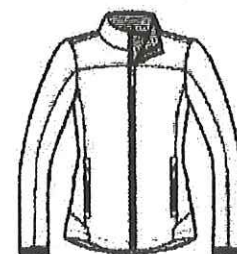
PORT AUTHORITY.**Port Authority® Ladies Glacier® Soft Shell Jacket.
L790**

One of our most popular jackets, the Glacier® is constructed from a polyester stretch woven shell, which is then bonded to polyester microfleece with an added laminate film insert to repel water. The result is a wind-resistant, water-resistant jacket with stretch that's perfect for corporate or weekend wear.

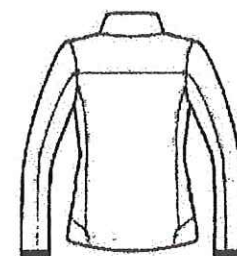
- 96/4 poly/spandex stretch woven shell
- 100% polyester microfleece lining
- 1000MM fabric waterproof rating
- 1000G/M² fabric breathability rating
- Two-way zipper
- Front zippered pockets
- Binding at cuffs
- Open hem

CARE INSTRUCTIONS

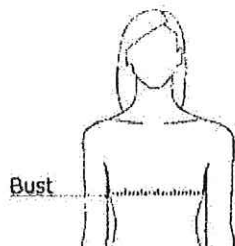
Machine wash cold. Do not dry clean, iron, bleach or tumble dry.



front



back

HOW TO MEASURE**BUST**

Measure under the arm and around the fullest part of the bust with arms down, keeping tape horizontal.

SIZE CHART

	S	M	XS	XXL	3XL	4XL	L	XL
Size	4/6	8/10	2	20/22	24/26	28/30	12/14	16/18
Bust	35-36	37-38	32-34	45-47	48-51	52-55	39-41	42-44

COLOR INFORMATION

Black/ Chrome

Smoke Gray/
Chrome

Shield Performance Soft Shell
Elbeco Style SH3500/SH3504/SH3509

line 16

- Style:** Shield Performance Soft Shell is a lightweight, breathable soft shell treated to repel stains and light rain. Soft shell features easy-access magnetic closure utility pockets, lower front and internal communications pockets, quick-release side zippers, adjustable cuffs and shoulder straps, and is designed to be worn as a stand-alone outer garment or as a mid-layer liner combined with the Shield Duty Jacket or HiVis Parka.
- Fabric:** This 2-way, stretch-bonded, three-layer fabric offers enhanced thermal protection, airflow and performance during elevated aerobic activities. 96% polyester/4% spandex outer with fleece interior is comfortable and warm. HydroTech membrane is waterproof, windproof and breathable, promoting moisture management, allowing the moisture to pass through the garment, and keeping the wearer dry and comfortable in all weather conditions. Weight is 7.6 oz. per square yard. The sleeve lining is brushed tricot for easy removal.
- Colors:** Black, navy and O.D. green.
- Collar:** Permanent collar is made of two plies of the shell fabric with the outer shell on the outside and fleece side facing inward. Collar points are well-shaped, symmetrical and measure 3" high. A loop set into the outside of the collar at the neck seam connects to a snap-strap on the interior of the outer shell to hold the soft shell in place when worn as a liner to the Duty Jacket or HiVis Parka.
- Sleeves:** Sleeves are tricot-lined and have a slight articulation and curve towards the front of the body. There is a 2" gusset at the lower sleeve. A small elastic loop set on the gusset seam line just above the stitch line of the cuff connects to a snap-tab on the outer shell sleeve to hold the soft shell in place when worn as a liner to the Duty or HiVis Parka.
- Cuffs:** To be 1" wide with elastic at the back and an adjustable tab with 1" FastLock at the front. A 1" x 3" cuff tab with hook FastLock is set in the inside seam to attach to the 1" loop FastLock set on the cuff.
- Front:** Front has a Vislon #5 two-way, auto-lock, dual separating zipper, functional up to the collar points. There must be an inner storm flap at the front behind the zipper all the way to the collar point for extra protection. Storm flap is folded over the top of the zipper on the right side to form an abrasion-resistant chin protector and is lined with Pellon.
- Side Vents:** Side vents open 10" from bottom of waistband. "Quick release" coil zippers are sewn into each side seam, extending through the waistband, to allow access to weapon and equipment. Zippers lock when the pull tab is locked in the upright position and are set to both the shell and permanent lining.
- A ¾" x 3" elasticized tab is set to the inside back of the hem and contains a stud snap to align with the two adjustable flat snaps on the front of the soft shell. Additional flat snap inside the back of the hem secures the tab when not in use.

Shield Performance Soft Shell
Elbeco Style SH3500/SH3504/SH3509

Seams: All stitching is even and uniform. All seams on the shell and liner are securely sewn. All seams are properly reinforced where needed via back-tack or bar-tack, 8 stitches per inch minimum to 12 stitches per inch maximum, and free from puckering, pleats, runoffs and raw edges.

External Pockets:

Two vertical slash pockets on the lower front of the soft shell have 6½" openings with reverse coil zipper closures and zipper hoods at each end and are fleece-lined for warmth. Right pocket has a D-ring attached to a 3½" long double-ply strap sewn into the pocket seam to secure keys.

Two large document/utility pockets on the upper front have vertical openings that measure 7½" and extend across the chest. Pockets have U-shaped bottoms with 3" x 5" patch pockets sewn to the sides closest to the wearer to secure a back-up weapon. Pocket openings are secured with dual magnet closures.

Internal Pockets:

Two patch-pockets set inside the lower front of the soft shell accommodate radios, tablets, etc. Pockets measure approximately 7½" wide x 9½" long and close with vertical zippers. There is a communications access opening in the top inside corner of each pocket.

Optional Items:

Two loose badge tabs measuring 1" x 4¼", unfinished, are included in the soft shell pocket to be attached by the customer, if needed. Eyelets are spaced 1½" apart on one and 1¾" apart on the other. A loose mic tab measuring ½" x 4" and name tape measuring 1" x 8" are also included in the soft shell's left side pocket.

Shoulder Straps:

Permanent utility straps made of two plies of the basic shell fabric are 1¼" wide and single-needle edge-stitched. Utility straps are tacked to shoulder at ends and center to form a 2" opening at the center of the strap for mic attachment.

Waistband: Waistband has 1" hem in the front of the soft shell. Back of soft shell has a Shirred elastic hem with a soft gripper strip.

Labels: Soft shell is permanently labeled with the manufacturer, size and laundry instructions. Soft shell must be able to withstand repeated machine washing with no deterioration in stitching, color, water resistance or windproofness.

Limited Warranty:

Manufacturer agrees to warrant the product to be free from defects in material and workmanship for a period of three years from date of purchase.

Shield Performance Soft Shell
Elbeco Style SH3500/SH3504/SH3509

UPC Identification:

A printed UPC bar code tag must be attached to every garment so as to be visible in the package. The UPC bar code must identify style, color and size information so as to be incorporated into an inventory management system. Appropriate support documentation must be available to assist Agency in encoding UPC information.

Code of Conduct:

All garments must be produced in acceptable non-sweatshop working conditions. Verification of acceptable working conditions are made through a completed Code of Conduct document that must be made available to the department. This document should list the location of the manufacturing companies/facilities and address child labor, wage and benefits, overtime, forced labor, freedom of association, harassment or abuse, health and safety, hours of work, non-discrimination, and no retaliation guidelines. Noncompliance of this clause is cause for rejection.

Finished Dimensions:

Size:	XS	S	M	L	XL	2XL	3XL	4XL
Center Back Length	23 ⁵ / ₈	24	24 ³ / ₈	24 ³ / ₄	25 ¹ / ₈	25 ¹ / ₂	25 ⁷ / ₈	26 ¹ / ₄
Chest	40	44	48	52	56	60	64	68
Sleeve Length	34 ¹ / ₂	35 ¹ / ₄	36	36 ³ / ₄	37 ¹ / ₂	38 ¹ / ₄	39	39 ³ / ₄
Bottom Hem Relaxed	34	38	42	46	50	54	58	62

Short – 2” shorter in Sleeve and Center Back Length than Regulars

Long – 2” longer in Sleeve and Center Back Length than Regulars

March 9, 2017

BodyShield External Vest Carrier
Elbeco Style V4110B/V4112B/V4114B

line 17

Style: The Elbeco BodyShield™ External Vest Carrier integrates an external vest carrier with communications technology access. This vest carrier is fully lined and has interior front and back pouches for housing an armor carrier in its existing manufacturer's outershell. Vest carrier features multiple storage pockets, a modified V-neck opening, epaulets, a zippered cummerbund waist closure, adjustable FastLock side closures with elastic panels, camera/mic tab and permanent sewn-in military stitches.

The body armor carrier and ballistic panels used in conjunction with the Elbeco BodyShield™ External Vest Carrier are available as separate items from body armor vendors and are not available from Elbeco. This is a cosmetic vest carrier designed to be worn over a uniform shirt and offers no ballistic and/or stab protection.

Tailoring: It is imperative that this garment is constructed according to the principles set forth in the specifications. All stitches must be of the proper tension and size to avoid puckering after the vest carrier has been laundered and give optimum durable press performance.

Neckline, armhole, sides, and bottom hem are double-stitched. Pockets, flaps and yoke are single-needle stitched on the edge.

Fabrics: Shell fabric is Syntax 600 Denier, 100% polyester plain weave. Fabric has stain and liquid repellency and UPF 50 protection, is easy care, non-pilling, and wrinkle-resistant with excellent color retention. Weight is 7.2 oz. per square yard.

Lining fabric is 65% polyester/35% cotton, 3 x 1 twill weave with moisture wicking technology, weighing 5.5 oz. per square yard.

Internal pouch fabric is 100% polyester mesh with moisture wicking and anti-microbial technology, weighing 3.4 oz. per square yard.

Colors: Black, tan, and midnight navy.

Front: Exterior is cut from shell fabric and interior is cut from twill lining fabric and mesh. Upper and lower parts of the interior are lined with twill, and the pouch is constructed from mesh.

Front has a false button placket 1½" wide extending from the neckline to the bottom of vest and is made of the same material as the vest carrier shell fabric with two rows of stitching, 1" apart. A 9" Reverse Coil #5 zipper is set in the front placket.

Non-functioning buttons are securely attached to the button placket. Amount and spacing of buttons vary in size. Large/Regular length have four buttons; the first button placed 2½" from the neckline and the remaining buttons spaced 3" apart.

BodyShield External Vest Carrier
Elbeco Style V4110B/V4112B/V4114B

Interior pouch has a vertical opening for insertion of the front of the armor carrier. Two zippers along the bottom of the pouch open from center to side and allow for easy insertion of mesh panels.

A 2" hook piece of FastLock is sewn to the inner edge of a 4" elastic extension on the front side panel and is reinforced with stitching to maintain shape and durability.

Document/Concealed Carry Pocket:

The 9" zippered opening in the placket opens to a large internal document pocket extending the width of the chest. Within this pocket are two 6" pass-through openings that provide access to items stored on the ballistic vest itself.

Camera/Mic Accommodation:

Zipper opening in the front placket accommodates on-body cameras. Camera mount tab on the placket accommodates a camera or a mic.

Pockets: Two double-entry chest pockets with mitered corners measure 5 $\frac{5}{8}$ " wide x 6" long (except on sizes XS & S). Side entry forms a utility pocket closed with FastLock. There is 1" bellows on the outside of the chest pocket for additional expansion of the outer pocket. Left pocket has a pencil compartment about 1 $\frac{1}{2}$ " wide. Both pockets have 1 $\frac{1}{2}$ " box-pleats stitched from top to bottom to prevent spreading.

Flaps: Two scalloped flaps finish 5 $\frac{3}{4}$ " long, 2 $\frac{3}{4}$ " wide at center and 2 $\frac{3}{8}$ " wide at sides (except on sizes XS and S). Flaps are secured to front of vest with two rows of stitching approximately $\frac{1}{2}$ " above top of pocket. Both flaps are interlined and have pencil openings about 1 $\frac{1}{2}$ " wide. There is a matching button and a buttonhole sewn on each flap with a removable button option. Side points of the flaps are secured to the pockets with FastLock sewn onto the flaps and pockets.

Badge Tab: Badge eyelets are set 1 $\frac{1}{4}$ " apart with the bottom buttonhole 1 $\frac{1}{2}$ " above the top of the left flap.

Back: Exterior is cut from shell fabric, and interior is cut from twill lining fabric and mesh. Upper and lower parts of the interior are lined with twill, and the pouch is constructed from mesh. A single-ply yoke is set to the back and shoulders with an edgestitch.

Interior pouch has a vertical opening for insertion of the front of the armor carrier. Two zippers along the bottom of the pouch open from center to side and allow easy insertion of mesh panels.

A wide loop piece of FastLock is sewn to the exterior of the back side panel to complete the side closure and is reinforced with stitching to maintain shape and durability.

BodyShield External Vest Carrier
Elbeco Style V4110B/V4112B/V4114B

Adjustable Waist Closure:

Vest carrier closure is adjustable at the waist and sides. Once the armor carrier is inserted through the interior pouch openings, the vest is donned and secured with a cummerbund-style stretch waistband, which is set in the back panel and closed around the waist underneath the front panel with a 4" Coil #5 zipper. Front of the vest is then closed over the back with the FastLock, aligned and adjusted for comfort.

Shoulder Straps:

Shoulder straps measure 1½" wide and are pointed at the end toward the neck of the shirt. The other end is sewn in the sleeve head seam. Pointed ends are fastened with one matching functional button.

Shoulder Opening:

There is an interior tunnel opening at the shoulder approximately 3" wide for convenient insertion and removal of the armor carrier's existing vest carrier. Opening is reinforced with lining fabric and a strap for the wearer's comfort. A 1½" wide external opening towards the center of the shoulder seam accommodates a mic wire or clip.

Permanent Creases:

Vest carrier has permanent military creases. Creases are stitched at the vest only, not through pockets and flaps. One crease in each front extends from hem to joining seam. Three vertical creases are in back; middle crease is on center back line and side creases are spaced equally from the center crease.

Tunnel Loops:

Four 1" x 2" tunnel loops are sewn on the inside lining to accommodate the VSSI suspension system – two on the front and two on the back. They are set 1" from finished hem of top of pouch and centered with the shoulder.

Options: A loose name tape measuring 1" wide x 8" long and a loose badge tab with two metal eyelets, 1¼" apart, are set inside the right front pocket for optional use.

Buttons: All buttons are made from high impact melamine and must match fabric.

Labels: BodyShield™ woven label is sewn in at interior neckline with size and content label sewn beneath the main label. Care label is sewn inside the wearer's right cummerbund.

Pressing and Packing:

Vest carriers are carefully pressed by hand in a first class manner and individually packed in polyethylene bags. Vests are shipped in strong boxes so as not to be damaged in shipment.

BodyShield External Vest Carrier
Elbeco Style V4110B/V4112B/V4114B

UPC Identification:

A printed UPC bar code tag must be attached to every garment so as to be visible in the package. The UPC bar code must identify style, color and size information so as to be incorporated into an inventory management system. Appropriate support documentation must be available to assist Agency in encoding UPC information.

Code of Conduct:

All garments must be produced in acceptable non-sweatshop working conditions. Verification of acceptable working conditions are made through a completed Code of Conduct document that must be made available to the department. This document should list the location of the manufacturing companies/facilities and address child labor, wage and benefits, overtime, forced labor, freedom of association, harassment or abuse, health and safety, hours of work, nondiscrimination, and no retaliation guidelines. Noncompliance of this clause is cause for rejection.

Finished Dimensions:

Full dimensional charts and fit guides are available upon request.

August 24, 2020

TexTrop2 Female 4-Pocket Pants
Elbeco Style E9315LC

line 19

- Style:** Pants are made with the Ladies Choice pattern, featuring a contour waistband with elastic side panels, shortened rise and reshaped hip and seat. Pants have a plain front, quarter-top front pockets, two back pockets and $\frac{7}{8}$ " belt loops.
- Fabric:** Burlington, 100% texturized polyester gabardine weave with mechanical stretch to insure permanent moisture control, superior breathability, soil resistance, easy care, wrinkle resistance, color matching and color retention. Weight is 6.85 oz. per square yard or 12.5 oz. per linear yard. Nano moisture wicking technology is applied at the fiber level to capture and pull fluids and perspiration away from the skin and spread it over the fabric surface for quick evaporation to keep the wearer dry and comfortable. Color: brown.
- Pockets**
- Front:** Front pocket openings are a minimum 6" and 5½" deep from the bottom of each opening. They are stitched, turned, and restitched. Inside facing is a separate piece of self-material finished no less than 1¼" wide. A non-woven interlining is fused to the facing for additional stability and strength.
- Back:** Back pockets have minimum openings of 5½" on sizes 10 and above, 5" on sizes 8 and below and are 6" deep. They are made with a Reese PW automatic machine and finished on the outside with an exposed top and bottom cord. Left pocket has a tab to button. Front pockets have straight bar-tacks, and back pockets have triangular bar-tacks.
- Pocketing:** To be black 65% polyester/35% cotton with a minimum thread count of 70 x 48, weighing 4.3 oz. per square yard.
- Waistband:** Ladies Choice construction provides superior comfort and performance. Curtain, attached with a rocap machine, is made of black, bias-cut, cotton-blended twill and has ½" shirt retention strip. Inside the waistband are two pieces of breathable non-woven stretch canvas for support. Waistband is fused for additional support.
- Finished waistband is 2" wide and closed with a crush-proof hook and eye, the eye being bar-tacked for stability. There are ¾" elastic sewn into each side of the waistband for superior fit. Finished waistband is set on and stitched below the lower edge through the outer fabric and the waistband curtain. No alternative waistband is acceptable.
- Belt Loops:** There are a minimum of five belt loops on waist sizes 8 and below, and a minimum of seven on sizes 10 and above. Each loop is lined and $\frac{7}{8}$ " wide with stitching on the face side $\frac{3}{8}$ " from each edge. Except for the back loop, which is tacked on, all loops are sewn into the rocap at the top and sewn into the bottom of the waistband. They accommodate a 1½" belt.
- Inside Trim:** Right fly lining is the same fabric and color as the waistband curtain. A non-woven interlining is sewn to the fly for additional stability and strength. Right fly lining is sewn to the left fly below the zipper.

TexTrop2 Female 4-Pocket Pants
Elbeco Style E9315LC

Zipper: Trousers are closed with a gun metal memory lock zipper and have a brass bottom stop at the base of the zipper chain. A straight bar-tack is sewn through from the outside of the garment to the inside at the bottom of the fly. It is sewn through the zipper tape, the right and left fly, and the right fly lining. Right and left fly are joined by an additional bar-tack located below the bottom zipper stop on the inside of the trouser.

Creasing: Front and back creases in the trouser legs must incorporate a permanent modified silicone crease produced by the Creaset system.

Seams: Entire trouser is seamed with polyester core or 100% polyester spun thread. Seat seam is stitched with a tandem needle seaming machine.

Labels: There is a woven brand label sewn in the left hip pocket bag. A woven size label is sewn next to the main label with a care and content label sewn below that label. An outside waistband label is marked with lot number, size, fiber content, cut number and UPC Identification.

Finishing and Pressing:

All loose threads are removed. Trousers must be pressed completely and properly with the sideseam, inseam and seat seam pressed open. There must be a Jetclip attached to the top fly of the finished trousers.

UPC Identification:

A printed UPC bar code tag must be attached to every garment so as to be visible in the package. The UPC bar code must identify style, color and size information so as to be incorporated into an inventory management system. Appropriate support documentation must be available to assist Agency in encoding UPC information.

Code of Conduct:

All garments must be produced in acceptable non-sweatshop working conditions. Verification of acceptable working conditions are made through a completed Code of Conduct document that must be made available to the department. This document should list the location of the manufacturing companies/facilities and address child labor, wage and benefits, overtime, forced labor, freedom of association, harassment or abuse, health and safety, hours of work, non-discrimination, and no retaliation guidelines. Noncompliance of this clause is cause for rejection.

TexTrop2 Female 4-Pocket Pants
Elbeco Style E9315LC

Finished Dimensions:

Size:	2	4	6	8	10	12
Waist relaxed	26½	27½	28½	29½	30½	32
Waist stretched	29½	30½	31½	32½	33½	35
Seat	36¼	37¼	38¼	39¼	40¼	41¼
Front Rise	8	8¼	8½	8¾	9	9¼
Back Rise	14⅝	14⅞	15⅛	15¾	15⅝	15⅞
Inseam	35	35	35	35	35	35

Size:	14	16	18	20	22	24
Waist relaxed	33½	35	37	39	41	43
Waist stretched	36½	38	40	42	44	46
Seat	43¼	44¾	46¾	48¾	50¾	52¾
Front Rise	9½	9¾	10	10¼	10½	10¾
Back Rise	16⅞	16¾	16⅝	16⅞	17⅞	17¾
Inseam	35	35	35	35	35	35

January 9, 2014

TexTrop2 Male 4-Pocket Pants
Elbeco Style E315RN *line 20*

Style: Pants are made with the Essential Fit uniform pattern, having a plain front with a covert waistband, quarter-top front pockets, two back pockets and $\frac{7}{8}$ " belt loops.

Fabric: Burlington, 100% texturized polyester gabardine weave with mechanical stretch to insure permanent moisture control, superior breathability, soil resistance, easy care, wrinkle resistance, color matching and color retention, Weight is 6.85 oz. per square yard or 12.5 oz. per linear yard. Nano moisture wicking technology is applied at the fiber level to capture and pull fluids and perspiration away from the skin and spread it over the fabric surface for quick evaporation to keep the wearer dry and comfortable. Color: brown.

Pockets

Front: Front pocket openings are a minimum 6½" and 6" deep from the bottom of each opening. Pockets are stitched, turned, and restitched. Inside facing is a separate piece of self-material finishing no less than 1¼" wide.

Back: Back pockets have minimum openings of 6" and 6" deep. They are made with a Reese PW automatic machine and finished on the outside with an exposed top and bottom cord. Left pocket has a tab and button closure. Front pockets have straight bar-tacks, and back pockets have triangular bar-tacks.

Pocketing: To be black 65% polyester/35% cotton with a minimum thread count of 70 x 48, weighing 4.3 oz. per square yard.

Waistband: Covert waistband contains a hidden elastic extension, providing up to 3" of additional stretch. Front of the outer waistband tapers through the covert opening at the top of the front pocket opening. The 1¼" wide elastic extends from the end of the taper through the waistband behind the sideseam. All stress points are bar-tacked.

Inner waistband is a DutyFit waistband, which provides additional stretch to the wearer's exact size while providing permanent recovery memory. DutyFit waistband is continuous on the inside of the waistband to provide additional support and recovery to the waistband extension. There are no split openings in the inside curtain.

Inside waistband is made with black poly/spandex/nylon/latex with 50% stretch. There is a ½" exposed gripper track in the center for shirt retention. Waistband measures 2½" and is attached with a rocap machine. Knit elastic banrol stiffener measuring 1" is sewn into the entire waistband to provide additional support.

Waistband is constructed using the closed method and measures 2" wide when finished. Waistband closure is accomplished with a double crush-proof hook and eye, bar-tacked for stability. Hooks and eyes are reinforced with stays made of a non-woven fabric that are anchored by the top-stitching for the fly facing and curtain. Top-stitching must be to the top of the waistband. Waistband must have a crack stitch for added strength. No alternative waistband is acceptable.

TexTrop2 Male 4-Pocket Pants
Elbeco Style E315RN

Belt Loops: There are a minimum of five lined loops on waist sizes 30 and below, seven lined loops on sizes 31 through 48, and nine on sizes 50 and over. Each loop is $\frac{7}{8}$ " wide of double-thickness with stitching on the face side $\frac{3}{8}$ " from each edge. Except for the back loop, which is tacked on, all loops are sewn into the bottom of the waistband and into the rocap. They accommodate a $1\frac{5}{8}$ " belt.

Inner Fly/Crotch:

Right fly and front crotch linings are the same fabric and color as the waistband curtain. A non-woven interlining is sewn to the fly for additional stability and strength. Right fly lining is sewn to the left fly below the zipper and continues centered on the join seam across the inseam and ends 1" onto the backseam. A separate French fly made of the outer fabric is sewn to the inside right fly.

There is a triple-strength crotch reinforcement to prevent seam failure in the crotch and inseam area. Crotch is secured with two rows of stitching. One row is on the inside of the trouser, then turned, and an additional row is sewn on the outside of trouser.

Zipper: Trousers are closed with a black memory lock zipper and have a brass bottom stop at the base of the zipper chain. A straight bar-tack is sewn through from the outside of the garment to the inside at the bottom of the fly. It is sewn through the zipper tape, the right and left fly, and the right fly lining. Right and left fly are joined by an additional bar-tack located below the bottom zipper stop on the inside of the trouser.

Creasing: Front and back creases in the trouser legs must incorporate a permanent modified silicone crease produced by the Creaset system.

Seams: Entire trouser is seamed with polyester core or 100% polyester spun thread. Seat seam is stitched with a tandem needle seat seaming machine.

Labels: A woven brand label is sewn in the left hip pocket bag. A woven size label is sewn next to the main label with a care and content label sewn below that label. An outside waistband label is marked with lot number, size, fiber content, cut number and UPC Identification.

Finishing and Pressing:

All loose threads are removed. Trousers must be pressed completely and properly with sideseam, inseam and seat seam pressed open. There must be a Jetclip attached to the top fly of the finished trouser.

UPC Identification:

A printed UPC bar code tag must be attached to every garment so as to be visible in the package. The UPC bar code must identify style, color and size information so as to be incorporated into an inventory management system. Appropriate support documentation must be available to assist Agency in encoding UPC information.

Code of Conduct:

TexTrop2 Male 4-Pocket Pants
Elbeco Style E315RN

All garments must be produced in acceptable non-sweatshop working conditions. Verification of acceptable working conditions are made through a completed Code of Conduct document that must be made available to the department. This document should list the location of the manufacturing companies/facilities and address child labor, wage and benefits, overtime, forced labor, freedom of association, harassment or abuse, health and safety, hours of work, non-discrimination, and no retaliation guidelines. Noncompliance of this clause is cause for rejection.

Finished Dimensions:

Size:	28	29	30	31	32	33	34	35	36
Waist relaxed	28½	29½	30½	31½	32½	33½	34½	35½	36½
Waist stretched	31½	32½	33½	34½	35½	36½	37½	38½	39½
Seat	38½/16	39¾	40¾	41¾/16	42½/16	43¾/16	44½/16	45	45½/16
Front Rise	9¾	9¾	9¾	10	10½	10¾	10½	10¾	10¾
Back Rise	14¾	15	15½	15¾	15¾	15½	15¾	15½/16	16
Thigh	25½/16	26½/16	26½/16	27¼	27¾	28¼	28¾	29¾/16	29½/16
Knee	20¾	20¾	20¾	21¾	21¾	21¾	21¾	22¾	22¾
Bottom	18	18¾	18¾	18¾	18½	18¾	18¾	18¾	19
Inseam	37½/16	37½/16	37½/16	37½/16	37½/16	37½/16	37½/16	37½/16	37½/16

Size:	37	38	40	42	44	46	48	50	52
Waist relaxed	37½	38½	40½	42½	44½	46½	48½	50½	52½
Waist stretched	40½	41½	43½	45½	47½	49½	51½	53½	55½
Seat	46½/16	47¾/16	49	50¾/16	52¾/16	53¾	55¾/16	57½/16	58¾
Front Rise	10¾	11¾	11¾	11¾	12¾	12¾	12¾	13¾	13¾
Back Rise	16¾/16	16¾/16	16½/16	17½/16	17¾	17¾	18¾	18¾/16	18½/16
Thigh	30¾	30¾/16	31½	32½	33¾	34½/16	35¼	36½/16	37
Knee	22¾	22¾	23¾	23¾	24¾	24¾	25¾	25¾	26¾
Bottom	19¾	19¾	19½	19¾	20	20¼	20½	20¾	21
Inseam	37½/16	37½/16	37½/16	37½/16	37½/16	37½/16	37½/16	37½/16	37½/16

February 25, 2015